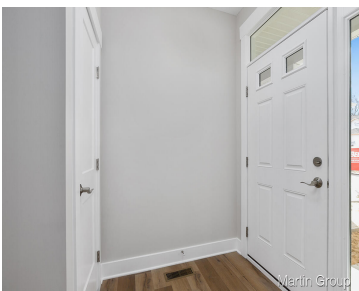


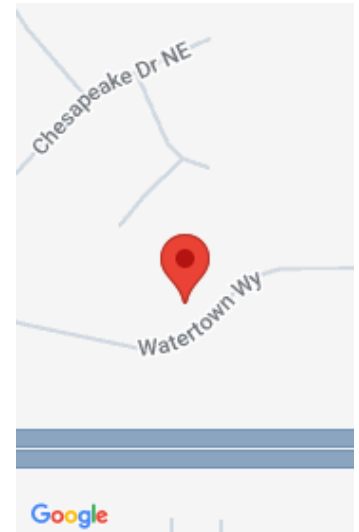
2219, WATERTOWN, GRAND RAPIDS, MI, 49505

https://tuckerbenner.com



Welcome to Viridian Place, conveniently situated just minutes away from Knapp’s Corners, the Medical Mile, and Downtown Grand Rapids. This stunning, end unit, townhome offers over 1,500 sq. ft. of beautifully finished living space, designed with both style and function in mind. Featuring 3 bedrooms, 2.5 baths, and the convenience of upstairs laundry, it’s the [...]

- 3 beds
- 3 baths
- Condominium
- Residential
- Active
- 1505 sq ft



Call us now

Basics

Category: Residential

Status: Active

Bathrooms: 3 baths

Year built: 2026

Lot Size Acres: 0 acres

County: Kent

Type: Condominium

Bedrooms: 3 beds

Area: 1505 sq ft

Bathrooms Full: 2

Rooms Total: 7

Bathrooms Half: 1

Building Details

Building Area Total: 1505 sq ft

Sewer: Public

Stories: 2

Basement: Slab

Construction Materials: Vinyl Siding

Heating: Forced Air

Roof: Composition, Shingle

Amenities & Features

Laundry Features: Laundry Closet, Upper Level

Utilities: Electricity Available, Cable Available, Natural Gas Connected, High-Speed Internet

Parking Features: Garage Faces Front, Garage Door Opener, Attached

WaterSource: Public

Interior Features: Ceiling Fan(s), Broadband, Garage Door Opener, Center Island

Window Features: Low-Emissivity Windows

Cooling: Central Air

Flooring: Carpet, Vinyl

Association Amenities: End Unit, Pets Allowed

Garage Spaces: 1

Appliances: Dishwasher, Disposal, Microwave, Range, Refrigerator

Lot Features: Sidewalk

Patio And Porch Features: Patio

Fees & Taxes

Call us now



Tax Assessed Value: \$1,474

Association Fee Frequency: Monthly

Association Fee: \$245

Tax Year: 2025

Tax Annual Amount: \$76

Association Fee Includes: Water, Snow Removal, Sewer, Lawn/Yard Care

School Information

High School District: Grand Rapids

Miscellaneous

Road Surface Type: Paved

CrossStreet: Maryland

Listing Terms: Cash, Conventional

Call us now