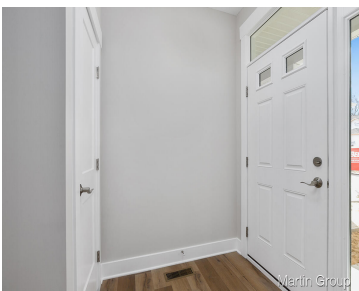


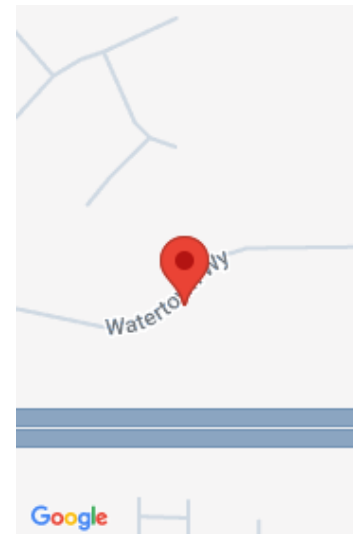
2268, WATERTOWN, GRAND RAPIDS, MI, 49505

<https://tuckerbenner.com>




Discover the excitement of our Townhome floor plan at Viridian Place Condos. With 1,991 sq. ft. of meticulously crafted living space, this townhouse boasts 3 bedrooms, 3 1/2 baths, an upstairs laundry, and a finished walkout lower level featuring a family room and a third full bath. Every aspect of this home is built with [...]


- 3 beds
- 4 baths
- Condominium
- Residential
- Active
- 1991 sq ft



Call us now



Phone: (231)730-8781
Email: tuckerbennerteam@gmail.com
Address: 2747 Lakeshore Drive, Twin Lake, MI 49457



Basics

Category: Residential
Status: Active
Bathrooms: 4 baths
Lot size: 0 sq ft
Bathrooms Full: 3
Rooms Total: 9
Bathrooms Half: 1

Type: Condominium
Bedrooms: 3 beds
Area: 1991 sq ft
Year built: 2024
Lot Size Acres: 0 acres
County: Kent

Building Details

Construction Materials: Vinyl Siding
Sewer: Public Sewer
Stories: 2

Architectural Style: Townhouse
Heating: Forced Air, Natural Gas
Basement: Walk Out

Amenities & Features

Utilities: Electricity Connected, Natural Gas Connected, Cable Connected, Public Water, Public Sewer, Broadband
Parking Features: Attached, Paved
WaterSource: Public
Interior Features: Garage Door Opener, Kitchen Island
Window Features: Low Emissivity Windows

Association Amenities: Pets Allowed, Interior Unit
Garage Spaces: 1
Appliances: Disposal, Dishwasher, Microwave, Range, Refrigerator
Lot Features: Sidewalk
Cooling: Central Air

Fees & Taxes

Call us now

Association Fee Frequency:
Monthly

Tax Year: 2023

Association Fee: \$245

Association Fee Includes: Water, Snow Removal,
Sewer, Lawn/Yard Care

School Information

High School District: Grand Rapids

Miscellaneous

Road Surface Type: Paved

CrossStreet: Maryland

Listing Terms: Cash, Conventional

Call us now



Phone: (231)730-8781
Email: tuckerbennerteam@gmail.com
Address: 2747 Lakeshore Drive, Twin Lake, MI 49457

