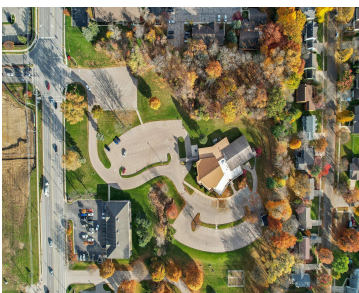


2300, LAKE LANSING, LANSING, MI, 48912

<https://tuckerbenner.com>



Welcome to an exceptional opportunity on Lake Lansing Rd in Lansing Township, Michigan where your retail vision can become a reality. This prime retail re-development site is ready for your unique vision to flourish and leave an indelible mark on this developing retail corridor. 7.25+ acres situated in the bustling commercial district, this site offers [...]

- 2 baths
- Retail/Commercial
- Commercial Sale
- Active



Basics

Category: Commercial Sale

Status: Active

Lot size: 7.25 sq ft

Bathrooms Full: 2

Business Type: Professional/Office, Professional Service, Restaurant, Bar/Tavern/Lounge, Retail, Recreation, Institutional

Type: Retail/Commercial

Bathrooms: 2 baths

Year built: 2000

Lot Size Acres: 7.25 acres

County: Ingham

Building Details

Number Of Units Total: 1

Sewer: Public Sewer

Roof: Rubber, Concrete

Number Of Buildings: 2

Construction Materials: Brick

Building Features: Barrier Free

Foundation Details: Combination, Block

Amenities & Features

Inclusions: 1, 1

Utilities: Telephone, Cable Connected, Public Water, Public Sewer, Broadband, Natural Gas Connected, Electricity Available, Natural Gas Available

Parking Features: Asphalt, Driveway

WaterSource: Public

Fireplaces Total: 2

Cooling: Central Air

Fees & Taxes

Tax Assessed Value: \$1

Tax Year: 2022

Tax Annual Amount: \$1,016.33

Call us now

School Information

High School District: Lansing

Miscellaneous

CrossStreet: Between US127 and Wood St.

Listing Terms:
Conventional, Cash

Tenant Pays: Building Insurance, Common Area Maintenance,
Electricity, Gas, Taxes, Sewer, Trash Collection, Water

Call us now



Phone: (231)730-8781
Email: tuckerbennerteam@gmail.com
Address: 2747 Lakeshore Drive, Twin Lake, MI 49457

