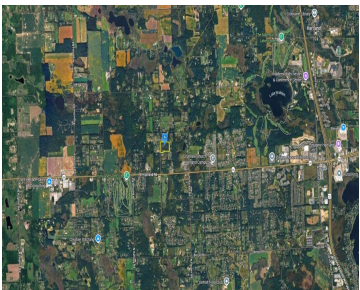
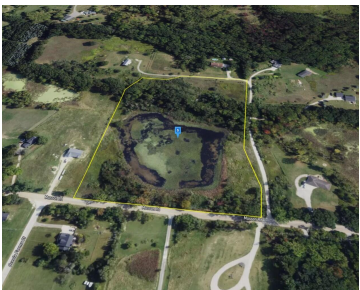
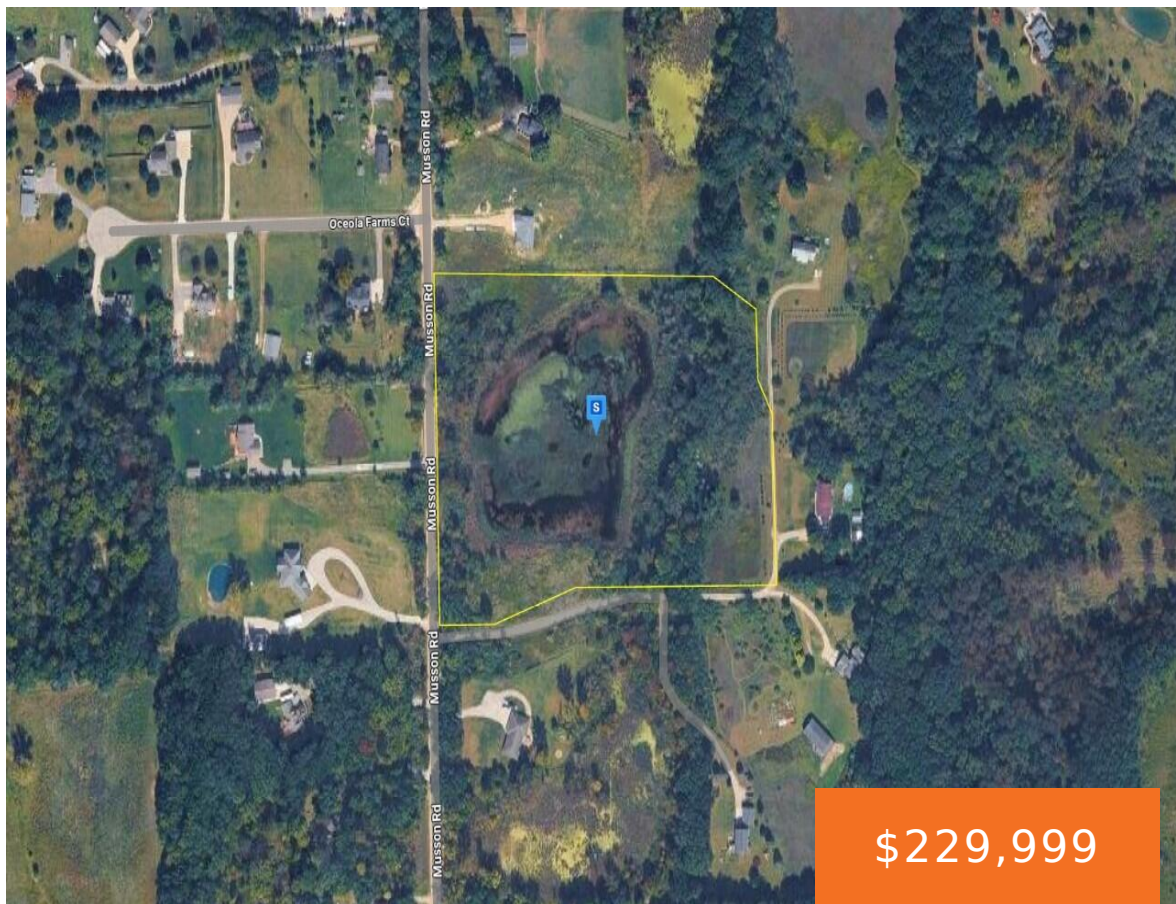


2300, MUSSON, HOWELL, MI, 48855

<https://tuckerbenner.com>



This vacant lot offers an excellent opportunity to build your future home or make a smart investment. Situated in a desirable neighborhood, the property features 11.49 acres with wooded terrain and a well and septic required. Enjoy a peaceful setting while remaining conveniently located near shopping, dining, schools, and major highways, providing easy access to [...]

- 0 baths
- Lot
- Land
- Active



Call us now



Phone: (231)730-8781
Email: tuckerbennerteam@gmail.com
Address: 2747 Lakeshore Drive, Twin Lake, MI 49457



Basics

Category: Land

Status: Active

Lot size: 11.49 sq ft

County: Livingston

Type: Lot

Bathrooms: 0 baths

Lot Size Acres: 11.49 acres

Amenities & Features

Utilities: None

Lot Features: Wooded, Corner Lot

Fees & Taxes

Tax Assessed Value: \$41,075

Tax Year: 2025

Tax Annual Amount: \$1,880

School Information

High School District: Hartland

HighSchool: Hartland High School

Middle Or Junior School: Hartland Middle School at Ore Creek

Elementary School: Hartland Village Elementary School

Miscellaneous

CrossStreet: Oceola Farms Ct

Listing Terms: Cash, Conventional

Call us now