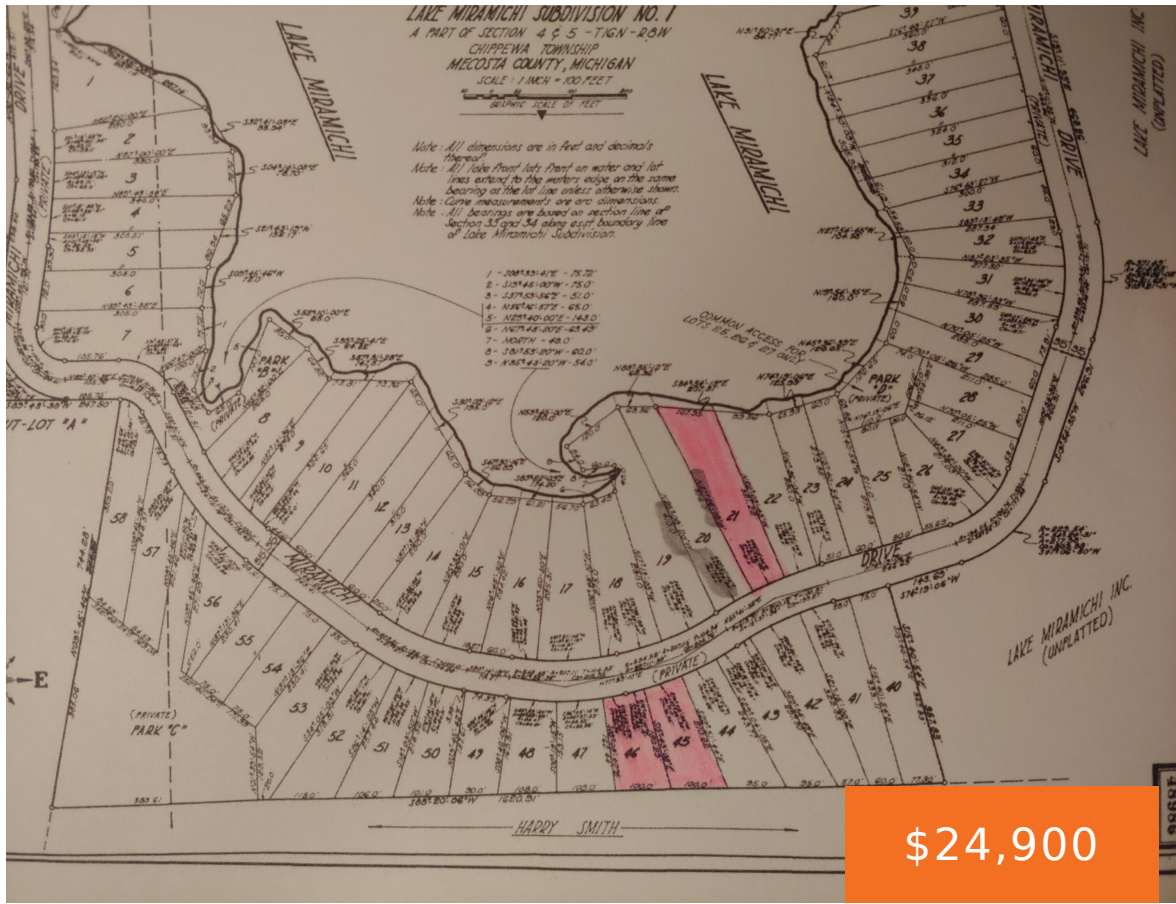


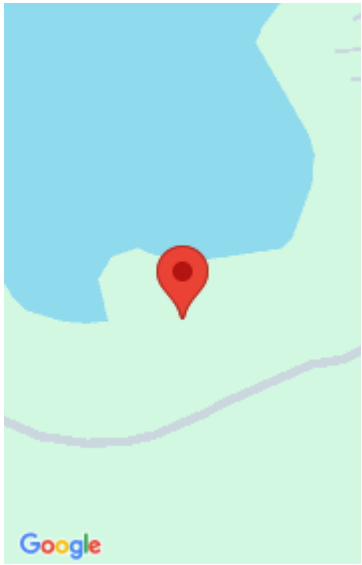
23021, MIRAMICHI DRIVE, EVART, MI, 49631

<https://tuckerbenner.com>



Escape to your own private oasis on the shores of beautiful Lake Miramichi in Evart, MI. This stunning waterfront property encompasses three lots totaling 1.5 acres, just 5 miles south of downtown Evart. Enjoy all the amenities of lakefront living, with access to a private lake perfect for swimming, fishing, and boating. Take advantage of [...]

- 0 baths
- Lot
- Land
- Active



Call us now



Phone: (231)730-8781
Email: tuckerbennerteam@gmail.com
Address: 2747 Lakeshore Drive, Twin Lake, MI 49457



Basics

Category: Land

Status: Active

Lot size: 1.5 sq ft

Lot Size Acres: 1.5 acres

Type: Lot

Bathrooms: 0 baths

Subdivision Name: Lake Miramichi Sub 1 and 2

County: Mecosta

Building Details

Current Use: Residential

Amenities & Features

Utilities: None

Association Amenities: Campground, Boat Launch, Clubhouse

Waterfront Features: Lake

Lot Features: Wooded

Fees & Taxes

Tax Assessed Value: \$28,600

Association Fee: \$675

Tax Year: 2024

Tax Annual Amount: \$1,271

School Information

High School District: Ewart

Miscellaneous

CrossStreet: Miramichi Drive and Huron

Listing Terms: Cash, Conventional

Call us now