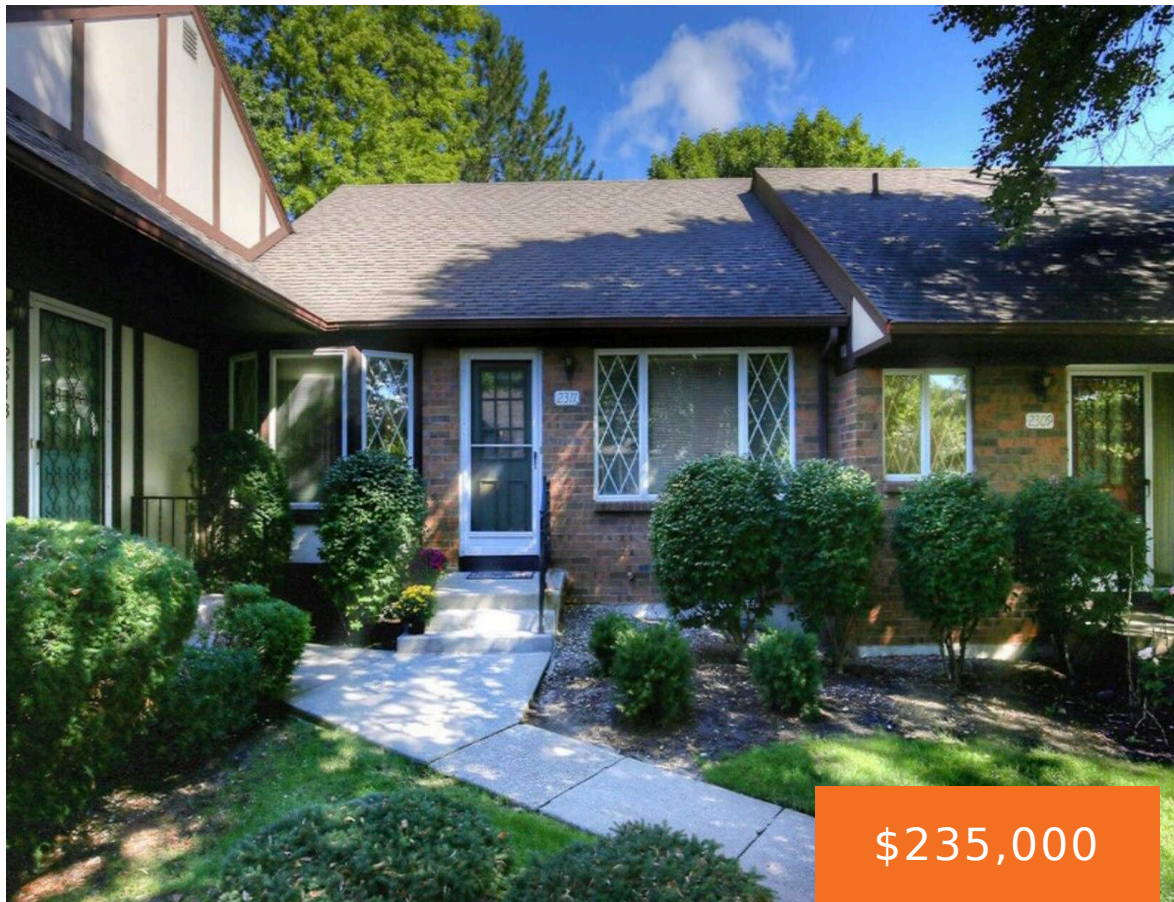


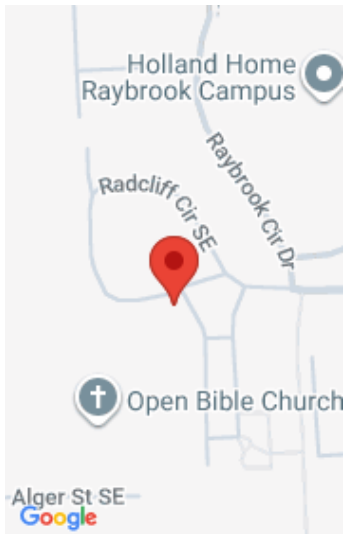
2311, RADCLIFF VILLAGE, GRAND RAPIDS, MI, 49546

<https://tuckerbenner.com>



Welcome to this amazing 2-bedroom, 2-bath ranch condo located in a quiet yet convenient neighborhood. This condo is freshly painted and well-maintained. The living room is light and bright and adjoins the dining area. Updated kitchen with painted cabinets with new hardware, counter tops, tile back splash, flooring, faucet. The primary bedroom is spacious with double [...]

- 2 beds
- 2 baths
- Condominium
- Residential
- Active
- 896 sq ft



Call us now

Phone: (231)730-8781

Email: tuckerbennerteam@gmail.com

Address: 2747 Lakeshore Drive, Twin Lake, MI 49457

Basics

Category: Residential

Status: Active

Bathrooms: 2 baths

Year built: 1978

Lot Size Acres: 0 acres

County: Kent

Type: Condominium

Bedrooms: 2 beds

Area: 896 sq ft

Bathrooms Full: 2

Rooms Total: 5

Building Details

Building Area Total: 896 sq ft

Construction Materials: Brick, Wood Siding

Architectural Style: Ranch

Sewer: Public

Heating: Forced Air

Stories: 2

Roof: Composition

Basement: Full

Amenities & Features

Laundry Features: In Basement, Laundry Room

Utilities: Natural Gas Connected, Cable Connected

Association Amenities: Cable TV, Clubhouse, Interior Unit, Meeting Room, Pets Allowed, Other

Parking Features: Detached

Garage Spaces: 1

WaterSource: Public

Appliances: Dishwasher, Disposal, Dryer, Range, Refrigerator, Washer

Interior Features: Garage Door Opener, Eat-in Kitchen

Lot Features: Level, Sidewalk, Wooded

Window Features: Screens

Exterior Features: Scrn Porch

Cooling: Central Air

Fees & Taxes

Call us now

Tax Assessed Value: \$53,526

Association Fee: \$305

Tax Annual Amount: \$2,659

Association Fee Frequency: Monthly

Tax Year: 2025

Association Fee Includes: Other, Water, Trash, Snow Removal, Sewer, Lawn/Yard Care, Heat, Cable/Satellite

School Information

High School District: Grand Rapids

Miscellaneous

Road Surface Type: Paved

Listing Terms: Conventional

CrossStreet: Raybrook

Call us now