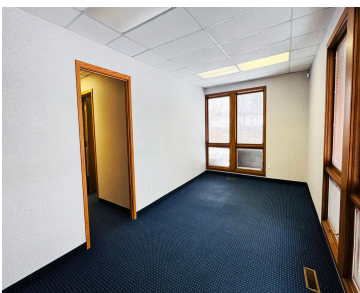


2323, GULL, KALAMAZOO, MI, 49048

<https://tuckerbenner.com>



AVAILABLE FOR LEASE: 2,300 RSF office suite available in single-story, 11,000+ SF multi-tenanted office complex on Kalamazoo's east side. Suite includes a reception/waiting area, several private offices and conference rooms, an open workspace area, large kitchenette/break room, and ample storage options. Well located on Gull Rd., between Ascension Borgess Hospital and the retail corridor, this [...]

- 0 baths
- Office
- Commercial Lease
- Active



Call us now

Phone: (231)730-8781  
Email: [tuckerbennerteam@gmail.com](mailto:tuckerbennerteam@gmail.com)  
Address: 2747 Lakeshore Drive, Twin Lake, MI 49457

# Basics

**Category:** Commercial Lease    **Type:** Office  
**Status:** Active    **Bathrooms:** 0 baths  
**Lot size:** 1.43 sq ft    **Year built:** 1979  
**Lot Size Acres:** 1.43 acres    **Business Type:** Professional Service, Professional/Office  
**County:** Kalamazoo

# Building Details

**Building Area Total:** 11260 sq ft    **Construction Materials:** Wood Siding  
**Heating:** Forced Air    **Roof:** Composition  
**Foundation Details:** Slab    **Number Of Buildings:** 5

# Amenities & Features

**Utilities:** Phone Available, Natural Gas Available, Electricity Available, Cable Available, Phone Connected, Natural Gas Connected, Electricity Connected, Cable Connected, Storm Sewer  
**Fireplaces Total:** 5    **Parking Features:** Asphalt, Driveway, Paved  
**Cooling:** Central Air

# Fees & Taxes

**Tax Assessed Value:** \$375,900    **Tax Year:** 2023

# School Information

**High School District:** Comstock

Call us now

---

# Miscellaneous

**Road Surface Type:** Paved **CrossStreet:** Elkerton Ave. & Brook Dr.  
**Tenant Pays:** Electric, Janitorial, Water, Sewer, Gas

**Call us now**



Phone: (231)730-8781  
Email: tuckerbennerteam@gmail.com  
Address: 2747 Lakeshore Drive, Twin Lake, MI 49457

