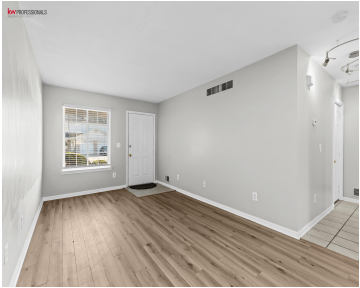


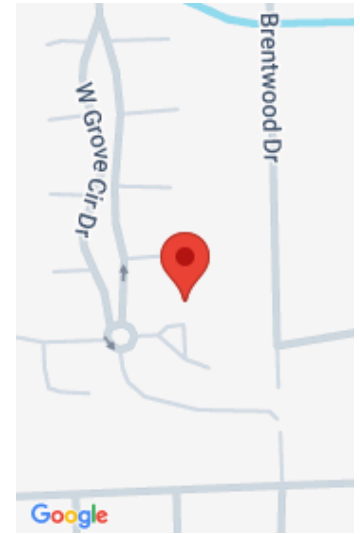
23348, REDMAN, TRENTON, MI, 48183

https://tuckerbenner.com



Welcome to this beautifully maintained, move-in ready 2BR/1.5BA condo with an attached one-car garage, nestled in a quiet and private cul-de-sac in a well-kept Trenton community. This inviting home features a bright and open living room with brand new laminate flooring, a functional kitchen with a new dishwasher and microwave, ample cabinetry, and a cozy [...]

- 2 beds
- 2 baths
- Condominium
- Residential
- Active
- 1108 sq ft



Call us now

Phone: (231)730-8781
Email: tuckerbennerteam@gmail.com
Address: 2747 Lakeshore Drive, Twin Lake, MI 49457

Basics

Category: Residential
Status: Active
Bathrooms: 2 baths
Lot size: 0 sq ft
Subdivision Name: West Grove Condo
Lot Size Acres: 0 acres
County: Wayne

Type: Condominium
Bedrooms: 2 beds
Area: 1108 sq ft
Year built: 1998
Bathrooms Full: 1
Rooms Total: 7
Bathrooms Half: 1

Building Details

Building Area Total: 1108 sq ft
Architectural Style: Colonial
Heating: Forced Air
Roof: Shingle

Construction Materials: Brick, Vinyl Siding
Sewer: Public
Stories: 2
Basement: Slab

Amenities & Features

Laundry Features: In Unit, Laundry Room, Upper Level
Utilities: Natural Gas Connected, Cable Connected, High-Speed Internet
Parking Features: Garage Faces Front, Attached
WaterSource: Public

Interior Features: Ceiling Fan(s), Pantry
Window Features: Insulated Windows, Garden Window
Exterior Features: Other

Flooring: Carpet, Ceramic Tile, Laminate
Association Amenities: Pets Allowed
Garage Spaces: 1
Appliances: Dishwasher, Dryer, Microwave, Range, Refrigerator, Washer
Lot Features: Cul-De-Sac
Patio And Porch Features: Deck, Porch(es)
Cooling: Central Air

Call us now

Fees & Taxes

Tax Assessed Value: \$30,387

Association Fee Frequency: Monthly

Association Fee: \$150

Tax Year: 2025

Tax Annual Amount: \$2,140

Association Fee Includes: Water, Snow Removal, Lawn/Yard Care

School Information

High School District: Woodhaven-Brownstown

HighSchool: Woodhaven High School

Middle Or Junior School: Patrick Henry Middle School

Elementary School: Erving Elementary School

Miscellaneous

Road Surface Type: Paved

CrossStreet: US-24 and West Rd

Listing Terms: Cash, Conventional

Call us now