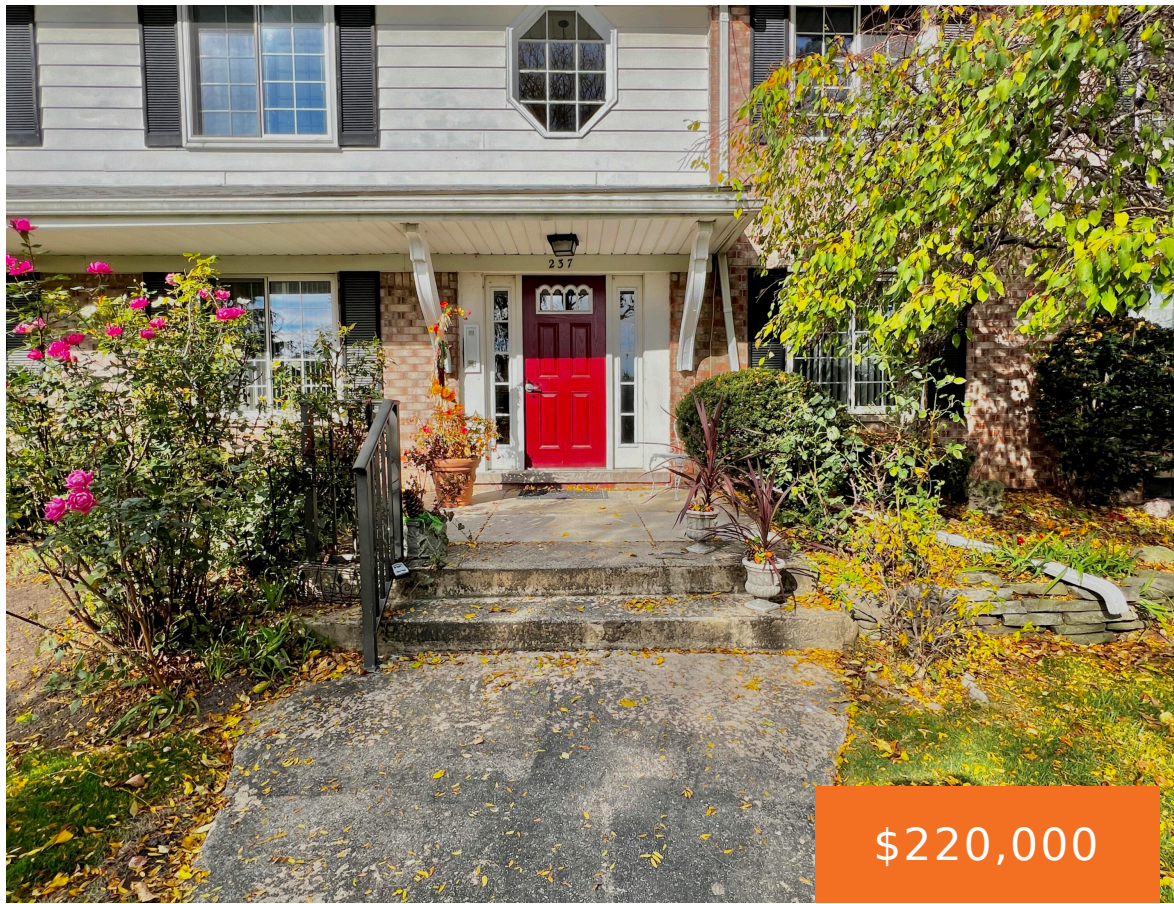


237, SQUARE LAKE, BLOOMFIELD HILLS, MI, 48302

<https://tuckerbenner.com>



\$220,000



Welcome to this stylish, fully updated 2-bedroom, 2-bathroom condo in the heart of Bloomfield Hills School District! This fully updated condo blends convenience with comfort. Step inside to a bright, open floor plan with an Extra Large Living Room and an adjacent Dining Room that flows seamlessly to a private balcony-perfect for morning coffee or [...]

- 2 beds
- 2 baths
- Condominium
- Residential
- Active
- 1443 sq ft



Basics



Call us now

Phone: (231)730-8781
Email: tuckerbennerteam@gmail.com
Address: 2747 Lakeshore Drive, Twin Lake, MI 49457



Category: Residential
Status: Active
Bathrooms: 2 baths
Lot size: 0 sq ft
Subdivision Name: Mulberry Square Apartments
Lot Size Acres: 0 acres
County: Oakland

Type: Condominium
Bedrooms: 2 beds
Area: 1443 sq ft
Year built: 1969
Bathrooms Full: 2
Rooms Total: 7

Building Details

Building Area Total: 1443 sq ft **Construction Materials:** Aluminum Siding, Brick
Architectural Style: Ranch **Sewer:** Public Sewer
Heating: Forced Air **Stories:** 1
Basement: Full

Amenities & Features

Laundry Features: In Basement, Laundry Room

Utilities: Natural Gas Connected, High-Speed Internet

Parking Features: Carport

WaterSource: Public

Window Features: Screens, Window Treatments

Cooling: Central Air

Pool Features: Outdoor/Inground

Association Amenities: Clubhouse, Pool

Garage Spaces: 2

Appliances: Washer, Refrigerator, Range, Oven, Dryer, Disposal, Dishwasher

Exterior Features: Balcony

Fees & Taxes



Call us now

Phone: (231)730-8781

Email: tuckerbennerteam@gmail.com

Address: 2747 Lakeshore Drive, Twin Lake, MI 49457



Tax Assessed Value: \$27,570 **Association Fee Frequency:** Monthly

Association Fee: \$345

Tax Year: 2024

Tax Annual Amount: \$1,356

Association Fee Includes: Water, Trash, Snow Removal, Sewer, Lawn/Yard Care

School Information

High School District: Bloomfield Hills

HighSchool: Bloomfield Hills High School

Middle Or Junior School: North Hills Middle School

Elementary School: Eastover Elementary

Miscellaneous

Road Surface Type: Paved

CrossStreet: Square Lake & Woodward Ave

Listing Terms: Cash, Conventional



Call us now

Phone: (231)730-8781

Email: tuckerbennerteam@gmail.com

Address: 2747 Lakeshore Drive, Twin Lake, MI 49457

