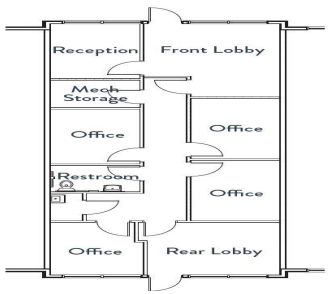


23950, CITY CENTER, MATTAWAN, MI, 49071

<https://tuckerbenner.com>



Two suites are now available for lease in Mattawan’s McGillen’s Crossing retail development. Both spaces are in turnkey condition and offer great retail visibility. Suite 23930 is 1,250 SF and offers great visibility with storefronts facing both McGillen Avenue and the McGillen Development with a large lobby and reception area. The space is currently built [...]

- 0 baths
- Retail/Commercial
- Commercial Lease
- Active



Basics

Category: Commercial Lease
Status: Active
Lot size: 0.87 sq ft
Lot Size Acres: 0.87 acres
County: Van Buren

Type: Retail/Commercial
Bathrooms: 0 baths
Year built: 2015
Business Type: Professional/Office, Retail



Call us now

Phone: (231)730-8781
 Email: tuckerbenner@gmail.com
 Address: 2747 Lakeshore Drive, Twin Lake, MI 49457



Building Details

Construction Materials: Stone, Brick, Vinyl Siding, Stucco

Building Features: Bath Common Area

Number Of Buildings: 1

Sewer: Public Sewer

Roof: Concrete

Amenities & Features

Utilities: Telephone, Cable Connected, Public Water, Public Sewer, Natural Gas Connected, Electricity Available, Natural Gas Available

WaterSource: Public

Cooling: Central Air

Parking Features:
Paved

Fireplaces Total: 1

School Information

High School District: Mattawan

Miscellaneous

Road Surface Type: Paved

CrossStreet: Main St & City Center Circle



Call us now

Phone: (231)730-8781

Email: tuckerbennerteam@gmail.com

Address: 2747 Lakeshore Drive, Twin Lake, MI 49457

