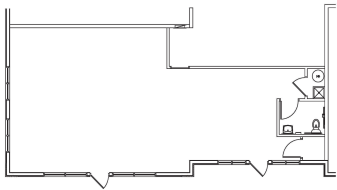


23950, CITY CENTER, MATTAWAN, MI, 49071

https://tuckerbenner.com



Two suites are now available for lease in Mattawan’s McGillen’s Crossing retail development. The spaces are in turnkey condition and offer great retail visibility. Suite 23930 is 1,250 SF and offers great visibility with storefronts facing both McGillen Avenue and the McGillen Development with a large lobby and reception area. The suite is currently built [...]

- 0 baths
- Retail/Commercial
- Commercial Lease
- Active



Basics

Category: Commercial Lease
Status: Active
Lot size: 0.87 sq ft
Lot Size Acres: 0.87 acres
County: Van Buren

Type: Retail/Commercial
Bathrooms: 0 baths
Year built: 2015
Business Type: Professional/Office, Retail

Call us now



Phone: (231)730-8781
Email: tuckerbennerteam@gmail.com
Address: 2747 Lakeshore Drive, Twin Lake, MI 49457



Building Area Total: 1150 sq ft **Construction Materials:** Stucco, Vinyl Siding, Brick, Stone
Sewer: Public Sewer **Heating:** Forced Air
Number Of Buildings: 1

Utilities: Phone Available, Water Available, Sewer Available, Natural Gas Available, Electricity Available, Phone Connected, Natural Gas Connected, Electricity Connected, Cable Connected	WaterSource: Public
Fireplaces Total: 1	Cooling: Central Air

High School District: Mattawan

CrossStreet: Main St & City Center Circle

Phone: (231)730-8781
Email: tuckerbennerteam@gmail.com
Address: 2747 Lakeshore Drive, Twin Lake, MI 49457