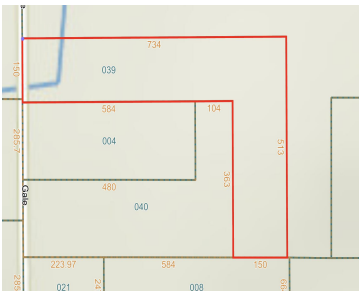
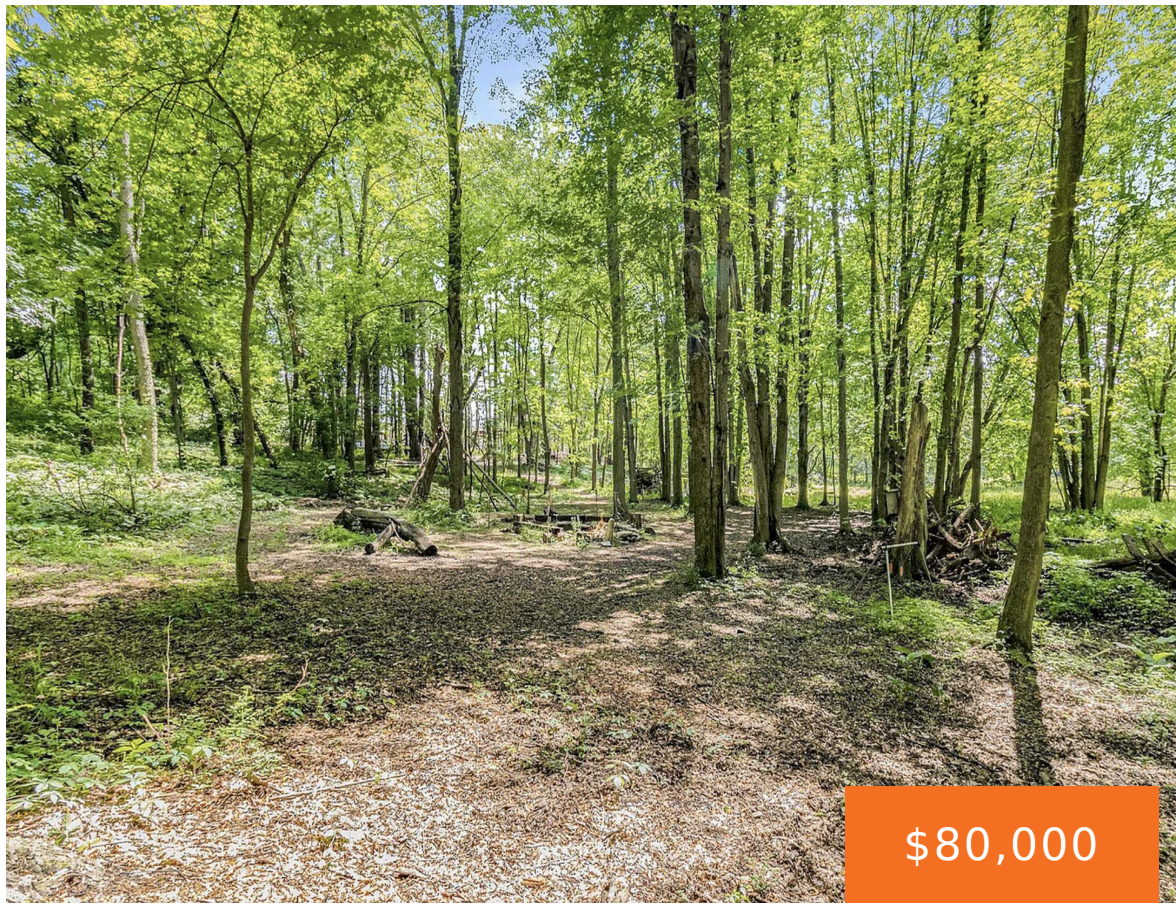


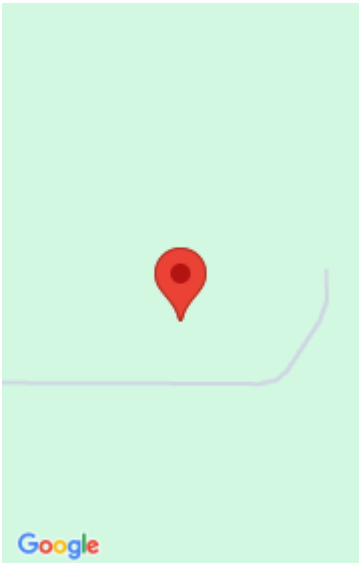
2407, GALE, EATON RAPIDS, MI, 48827

https://tuckerbenner.com



Discover the potential of 2407 Gale Rd—4 peaceful acres in Eaton Rapids offering the perfect blank canvas for your vision. The existing home and barn foundations remain after a past fire, giving you a head start to rebuild in a quiet, private setting surrounded by nature. Whether you’re dreaming of a custom home, hobby farm, [...]

- 0 baths
- Acreage
- Land
- Active



Call us now

Phone: (231)730-8781
Email: tuckerbennerteam@gmail.com
Address: 2747 Lakeshore Drive, Twin Lake, MI 49457

Basics

Category: Land
Status: Active
Lot size: 4 sq ft
County: Ingham

Type: Acreage
Bathrooms: 0 baths
Lot Size Acres: 4 acres

Amenities & Features

Utilities: Electricity Available, Electricity Connected **Waterfront Features:** Stream/Creek

Fees & Taxes

Tax Assessed Value: \$92,377 **Tax Year:** 2025
Tax Annual Amount: \$2,586

School Information

High School District: Eaton Rapids

Miscellaneous

CrossStreet: Gale Rd & Plains Rd **Listing Terms:** Cash, Contract

Call us now