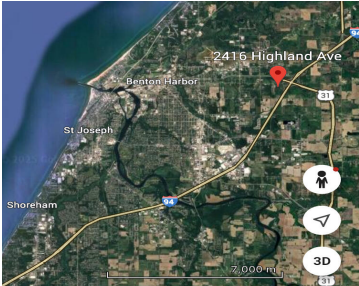
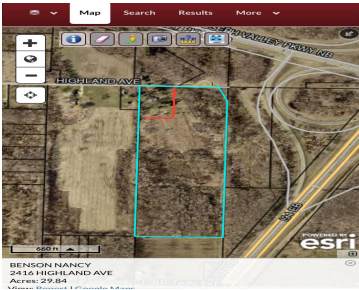


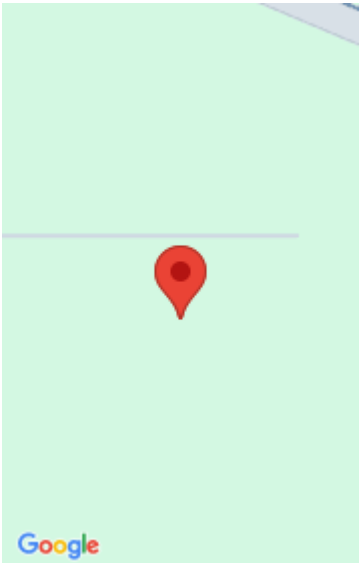
2416, HIGHLAND, BENTON HARBOR, MI, 49022

<https://tuckerbenner.com>



This is a gorgeous 27 Acre Parcel with almost 300’ of road frontage & over 1000’ deep, with a private pond, heavily wooded in areas & some areas are already partially cleared for a great building site! Or you could split the land & build several homes & each would have its own private setting! [...]

- 0 baths
- Acreage
- Land
- Active



Basics

Category: Land

Status: Active

Lot size: 27 sq ft

County: Berrien

Type: Acreage

Bathrooms: 0 baths

Lot Size Acres: 27 acres

Building Details

Current Use: Recreational, Hunting

Amenities & Features

Utilities: Natural Gas Available, Electricity Available, None

Waterfront Features: Pond

Lot Features: Level, Buildable, Wooded

Fees & Taxes

Tax Assessed Value: \$65,882

Tax Year: 2024

School Information

High School District: Benton Harbor

Miscellaneous

Road Surface Type: Paved

CrossStreet: Crystal Avenue

Listing Terms: Cash, Conventional

Call us now