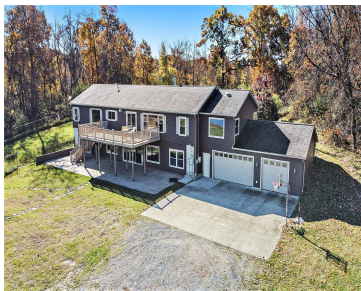


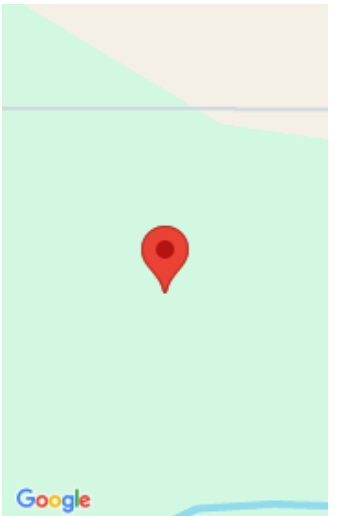
2479, OAKLEY, STOCKBRIDGE, MI, 49285

https://tuckerbenner.com



Country Home on 75 acres for sale in Ingham County Michigan, Farm for sale in Ingham County Michigan, Ranch for sale in Ingham County Michigan, Land for sale in Ingham County Michigan, Recreational Land for sale in Ingham County Michigan, Hunting Land for sale in Ingham County Michigan, Multi-Use Land for sale in Ingham County [...]

- 4 beds
- 4 baths
- Single Family Residence
- Residential
- Active
- 3268 sq ft



Call us now



Phone: (231)730-8781
Email: tuckerbennerteam@gmail.com
Address: 2747 Lakeshore Drive, Twin Lake, MI 49457



Basics

Category: Residential

Status: Active

Bathrooms: 4 baths

Lot size: 75 sq ft

Bathrooms Full: 4

Rooms Total: 13

Type: Single Family Residence

Bedrooms: 4 beds

Area: 3268 sq ft

Year built: 2010

Lot Size Acres: 75 acres

County: Ingham

Building Details

Building Area Total: 3268 sq ft

Architectural Style: Ranch

Heating: Forced Air

Roof: Asphalt

Construction Materials: Vinyl Siding

Sewer: Septic Tank

Stories: 2

Basement: Full, Walk-Out Access

Amenities & Features

Laundry Features: Main Level

Parking Features: Garage Faces Front, Attached

Fireplace Features: Den, Living Room

WaterSource: Well

Interior Features: Broadband, Garage Door Opener, LP Tank Owned, Wet Bar

Window Features: Insulated Windows

Utilities: Phone Available, Electricity Available, Cable Available

Waterfront Features: Pond

Garage Spaces: 2

Appliances: Dishwasher, Disposal, Dryer, Freezer, Refrigerator, Washer

Lot Features: Recreational, Tillable, Wooded, Rolling Hills

Fireplaces Total: 2

Fees & Taxes

Call us now

Tax Assessed Value: \$209,812

Tax Annual Amount: \$4,388

Tax Year: 2025

School Information

High School District: Stockbridge

Miscellaneous

Road Surface Type: Paved

CrossStreet: Budd Rd

Listing Terms: Cash, Conventional

Call us now