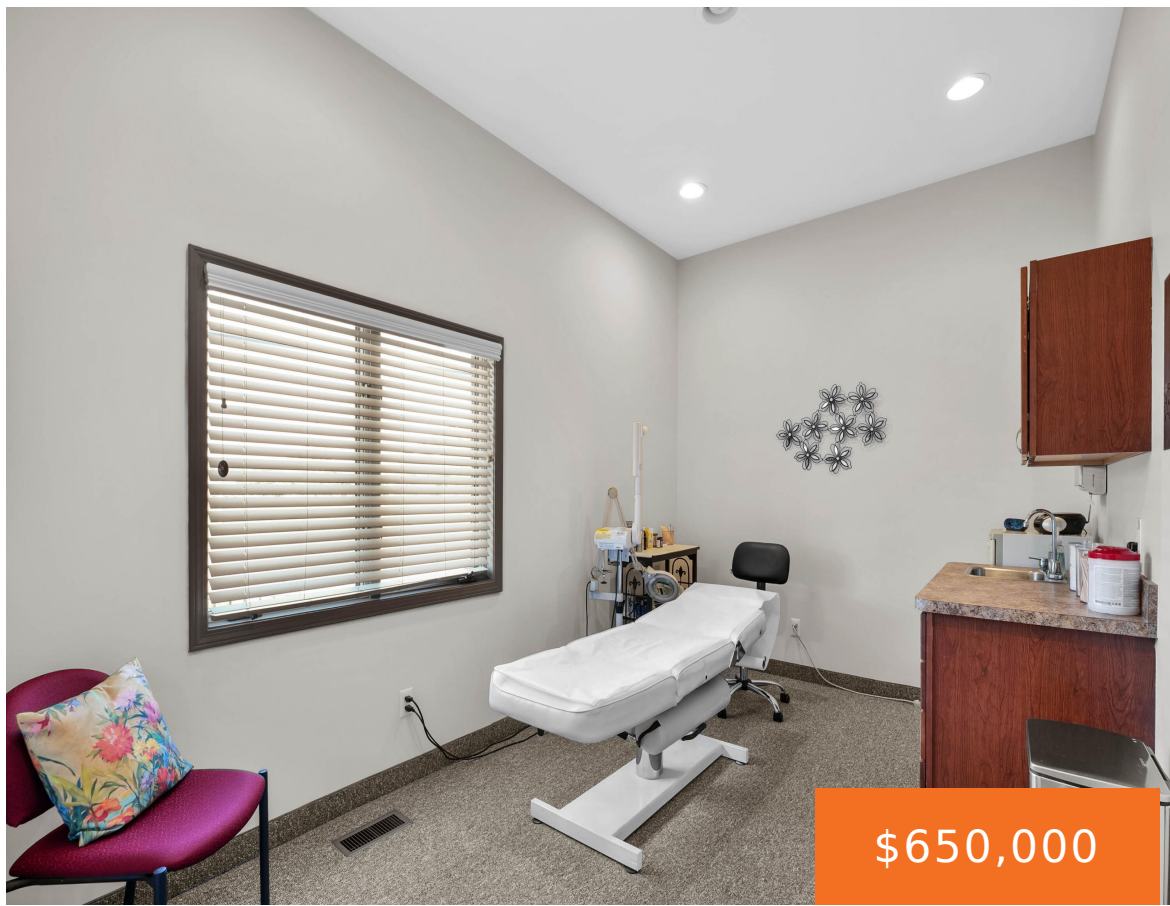
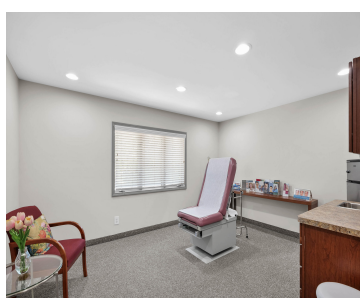


24825, EUREKA, TAYLOR, MI, 48180

https://tuckerbenner.com



\$650,000



Exceptional commercial property ideally suited for a medical practice, professional office, wellness center, or specialty healthcare provider. Designed with both functionality and patient comfort in mind, this versatile space offers an efficient layout and multiple private office areas. The main level features a spacious executive office complete with a cozy fireplace and private restroom, creating [...]

- 3 baths
- Office
- Commercial Sale
- Active



Basics

Category: Commercial Sale

Status: Active

Lot size: 0.31 sq ft

Bathrooms Full: 3

Business Type: Professional/Office, Professional Service

Type: Office

Bathrooms: 3 baths

Year built: 1979

Lot Size Acres: 0.31 acres

County: Wayne

Call us now



Phone: (231)730-8781

Email: tuckerbennerteam@gmail.com

Address: 2747 Lakeshore Drive, Twin Lake, MI 49457



Building Details

Building Area Total: 5368 sq ft **Number Of Units Total:** 2

Construction Materials: Brick **Heating:** Forced Air

StoriesTotal: 2

Building Features: Multi User Facility, Security System

Number Of Buildings: 1

Amenities & Features

Inclusions: Real Estate **Utilities:** Cable Available, Phone Connected, Natural Gas Connected, Electricity Connected

Cooling: Central Air

Fees & Taxes

Tax Assessed Value: \$132,310

Tax Year: 2025

Tax Annual Amount: \$9,155

School Information

High School District: Taylor

Miscellaneous

CrossStreet: Eureka and Telegraph

Listing Terms: Conventional, Cash

Call us now



Phone: (231)730-8781

Email: tuckerbennerteam@gmail.com

Address: 2747 Lakeshore Drive, Twin Lake, MI 49457

