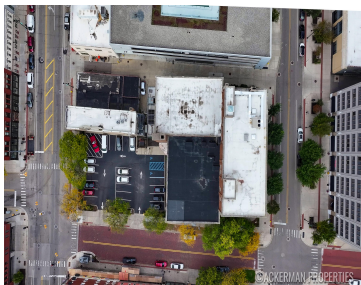


25, SHELDON, GRAND RAPIDS, MI, 49503

<https://tuckerbenner.com>



Positioned in the heart of downtown Grand Rapids, 25 Sheldon SE presents an exceptional opportunity for developers, hotel operators, and hospitality groups seeking a landmark property with size, character, and prime walkability. Originally constructed in 1921 and renovated in 2016, this 48,211 SF building spans four stories plus a walkout lower level, offering a rare [...]

- 10 baths
- Office
- Commercial Sale
- Active



Basics

Category: Commercial Sale

Status: Active

Lot size: 0.65 sq ft

Bathrooms Full: 10

Business Type: Professional/Office, Recreation, Institutional

Type: Office

Bathrooms: 10 baths

Year built: 1921

Lot Size Acres: 0.65 acres

County: Kent

Building Details

Building Area Total: 48211 sq ft

Number Of Units Total: 1

Construction Materials: Brick

Heating: Heat Pump, Steam

StoriesTotal: 5

Building Features: Fire Sprinkler, Multi User Facility

Roof: Rubber

Foundation Details: Concrete Perimeter, Block

Number Of Buildings: 1

Amenities & Features

Parking Total: 20

Inclusions: Other, Real Estate

Utilities: Natural Gas Connected, Electricity Connected, Cable Connected, Storm Sewer

WaterSource: Private Water

Cooling: Central Air

Fees & Taxes

Tax Year: 2025

School Information

Call us now

High School District: Grand Rapids

Miscellaneous

Road Surface Type: Paved

CrossStreet: Sheldon and Weston

Listing Terms: Conventional, Cash

Call us now