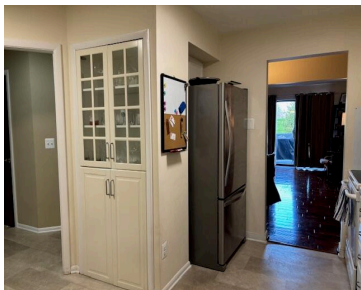
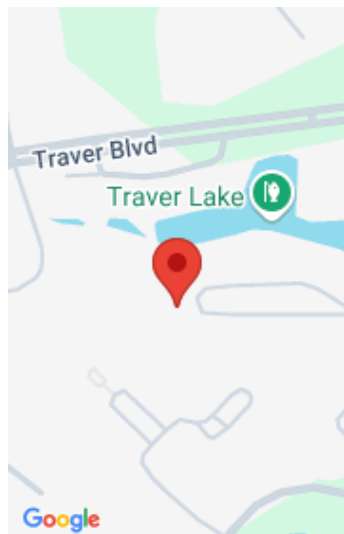


**2503, MEADE, ANN ARBOR, MI, 48105**  
<https://tuckerbenner.com>



Light and bright Traver Lakes condo available for lease starting July 1st. Spacious 2-story condo with full, finished basement. Large, eat-in kitchen with loads of cabinet/counter space, formal dining area, living room with gas fireplace. Deck off living area, as well as large deck/patio off walk-out basement. Super spacious primary suite with bath and walk [...]

- 2 beds
- 3 baths
- Condominium
- Residential Lease
- Active
- 2000 sq ft



**Call us now**

Phone: (231)730-8781  
Email: [tuckerbennerteam@gmail.com](mailto:tuckerbennerteam@gmail.com)  
Address: 2747 Lakeshore Drive, Twin Lake, MI 49457





# Basics

**Category:** Residential Lease  
**Status:** Active  
**Bathrooms:** 3 baths  
**Lot size:** 0 sq ft  
**Bathrooms Full:** 2  
**County:** Washtenaw

**Type:** Condominium  
**Bedrooms:** 2 beds  
**Area:** 2000 sq ft  
**Year built:** 1979  
**Lot Size Acres:** 0 acres  
**Bathrooms Half:** 1



# Building Details

**Heating:** Forced Air  
**Basement:** Full, Walk-Out Access

**Stories:** 2



# Amenities & Features

**Laundry Features:** In Basement, In Unit, Laundry Room, Lower Level  
**Garage Spaces:** 1  
**Cooling:** Central Air

**Parking Features:** Garage Faces Front, Garage Door Opener, Attached  
**Patio And Porch Features:** Patio



# Fees & Taxes

**Association Fee Includes:** Lawn/Yard Care, Snow Removal



# School Information

## Call us now

**High School District:** Ann Arbor

**Middle Or Junior School:** Clague Middle School

**HighSchool:** Skyline High School

**Elementary School:** Logan Elementary School

## Miscellaneous

**CrossStreet:** Off Nixon, N of Plymouth Rd

**Tenant Pays:** A/C, Cable/Satellite, Electric, Heat, Housekeeping, Internet Access, Linens, Sewer, Water, WIFI

**Owner Pays:** Association Fees, Lawn/Yard Care, Snow Removal, Taxes

Call us now