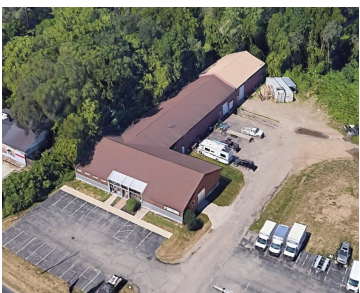
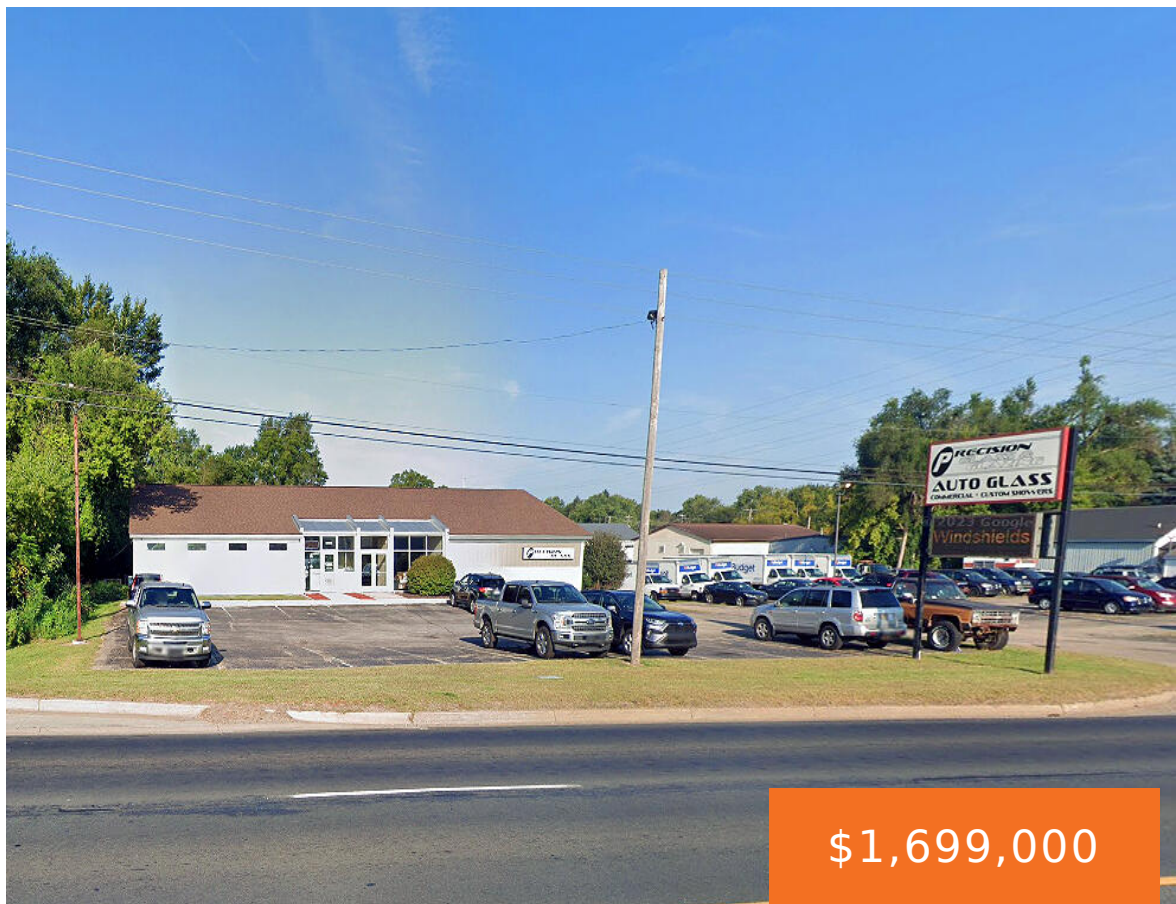


2504, SPRINKLE, KALAMAZOO, MI, 49001
https://tuckerbenner.com



SALE-LEASEBACK OPPORTUNITY: Fee-simple interest in the fabrication/distribution/corporate headquarters occupied by Precision Glass & Glazing, LLC on Kalamazoo’s southeast side. Located on S. Sprinkle Rd., between I-94 and the I-94 Business Loop, this offering consists of ±18,720 SF of industrial improvements situated on ±1.66 acres of land – with a new 10-year net lease to be [...]

- 1 bath
- Industrial
- Commercial Sale
- Active



Basics

Category: Commercial Sale

Status: Active

Lot size: 1.66 sq ft

Bathrooms Full: 1

Business Type: Professional Service, Distribution, Storage

Type: Industrial

Bathrooms: 1 bath

Year built: 1984

Lot Size Acres: 1.66 acres

County: Kalamazoo

Building Details

Building Area Total: 18720 sq ft

Construction Materials: Wood Siding, Metal Siding

Heating: Forced Air, Radiant

Roof: Composition

Number Of Units Total: 1

Sewer: Septic Tank

StoriesTotal: 1

Number Of Buildings: 3

Amenities & Features

Parking Total: 30

Utilities: Phone Available, Natural Gas Available, Electricity Available, Cable Available, Phone Connected, Natural Gas Connected, Electricity Connected, Cable Connected, Water Available, Sewer Available, Storm Sewer, Broadband

Cooling: Central Air

Inclusions: Non-Applicable

WaterSource: Public

Fees & Taxes

Tax Assessed Value: \$346,320

Tax Annual Amount: \$22,861

Tax Year: 2023

Call us now

School Information

High School District: Kalamazoo

Miscellaneous

Road Surface Type: Paved

CrossStreet: Miller Rd. & I-94

Listing Terms: Cash

Call us now