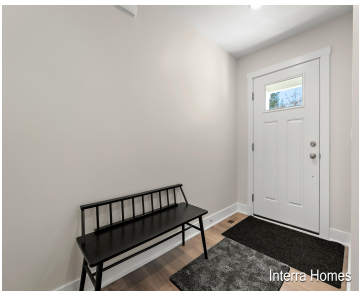


# 251, HICKORY VALLEY, KALAMAZOO, MI, 49009

https://tuckerbenner.com



Open house Thursday 12-2pm. Buyer(s) eligible for rate lock incentive being offered by seller or \$10,000 towards buyers closing costs. Must close by Feb 27, 2026. Interra Homes presents their Ashford floor plan. A 3 bedroom, 3 bathroom home with 2000 Square Feet finished. The kitchen features stainless steel appliances, tile backsplash and solid surface [...]

- 3 beds
- 3 baths
- Condominium
- Residential
- Active
- 2001 sq ft



## Call us now

Phone: (231)730-8781

Email: tuckerbennerteam@gmail.com

Address: 2747 Lakeshore Drive, Twin Lake, MI 49457

# Basics

<b>Category:</b> Residential	<b>Type:</b> Condominium
<b>Status:</b> Active	<b>Bedrooms:</b> 3 beds
<b>Bathrooms:</b> 3 baths	<b>Area:</b> 2001 sq ft
<b>Year built:</b> 2025	<b>Subdivision Name:</b> Redstone Farms Condominiums
<b>Bathrooms Full:</b> 3	<b>Lot Size Acres:</b> 0 acres
<b>Rooms Total:</b> 6	<b>County:</b> Kalamazoo

# Building Details

<b>Building Area Total:</b> 1398 sq ft	<b>Construction Materials:</b> Stone, Vinyl Siding
<b>Architectural Style:</b> Ranch	<b>Sewer:</b> Public
<b>Heating:</b> Forced Air	<b>Stories:</b> 1
<b>Roof:</b> Shingle	<b>Basement:</b> Full, Walk-Out Access

# Amenities & Features

<b>Laundry Features:</b> Gas Dryer Hookup, Laundry Room, Main Level, Washer Hookup	<b>Utilities:</b> Cable Available, Natural Gas Connected
<b>Association Amenities:</b> End Unit, Pets Allowed	<b>Parking Features:</b> Garage Faces Front, Garage Door Opener, Attached
<b>Fireplace Features:</b> Gas Log, Living Room	<b>Garage Spaces:</b> 2
<b>WaterSource:</b> Public	<b>Appliances:</b> Humidifier, Dishwasher, Disposal, Microwave, Range, Refrigerator, Water Softener Owned
<b>Interior Features:</b> Ceiling Fan(s), Broadband, Garage Door Opener, Center Island, Pantry	<b>Window Features:</b> Screens, Insulated Windows
<b>Patio And Porch Features:</b> Deck, Patio	<b>Fireplaces Total:</b> 1
<b>Cooling:</b> Central Air	

## Call us now

---

## Fees & Taxes

<b>Tax Assessed Value:</b> \$23,300	<b>Association Fee Frequency:</b> Monthly
<b>Association Fee:</b> \$325	<b>Tax Year:</b> 2025
<b>Tax Annual Amount:</b> \$1,455	<b>Association Fee Includes:</b> Water, Trash, Snow Removal, Sewer, Lawn/Yard Care

---

## School Information

**High School District:** Kalamazoo

---

## Miscellaneous

<b>Road Surface Type:</b> Paved	<b>CrossStreet:</b> Skyridge and Green Meadow
<b>Listing Terms:</b> Cash, VA Loan, Conventional	

**Call us now**