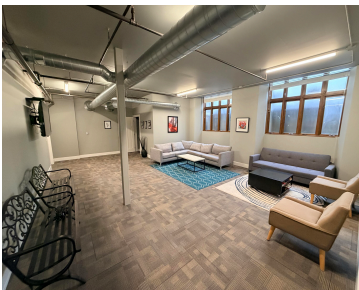
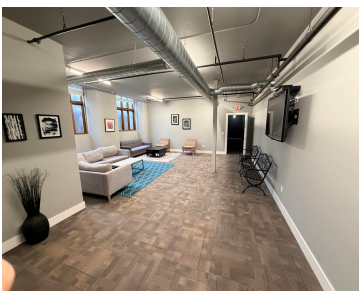


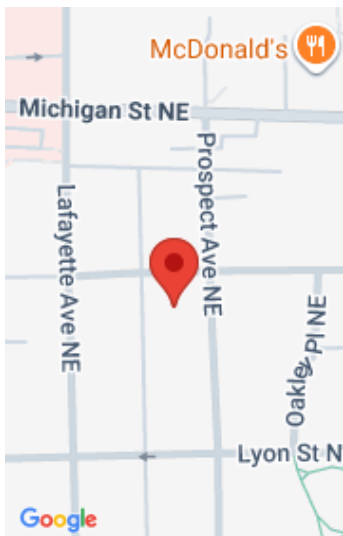
253, PROSPECT, GRAND RAPIDS, MI, 49503

https://tuckerbenner.com



Prospect Lofts Condominium. This home is in the premier Heritage Hill address. Many of the original characteristics have been preserved of this beautiful historical church. The finishes are high quality with tall ceilings, granite surfaces and stainless steel kitchen appliances. Each unit has a washer and dryer. Prospect Lofts has its own private parking lot [...]

- 2 beds
- 1 bath
- Condominium
- Residential
- Active
- 930 sq ft



Call us now

Phone: (231)730-8781
Email: tuckerbennerteam@gmail.com
Address: 2747 Lakeshore Drive, Twin Lake, MI 49457

Basics

Category: Residential

Status: Active

Bathrooms: 1 bath

Year built: 1933

Lot Size Acres: 0 acres

County: Kent

Type: Condominium

Bedrooms: 2 beds

Area: 930 sq ft

Bathrooms Full: 1

Rooms Total: 5

Building Details

Building Area Total: 930 sq ft

Architectural Style: Ranch

Heating: Forced Air

Basement: Slab

Construction Materials: Brick

Sewer: Public

Stories: 1

Amenities & Features

Laundry Features: Laundry Closet

WaterSource: Public

Cooling: Central Air

Utilities: Cable Connected, High-Speed Internet

Appliances: Dishwasher, Dryer, Microwave, Oven, Range, Refrigerator, Washer

Fees & Taxes

Tax Assessed Value: \$134,900

Association Fee: \$497

Tax Annual Amount: \$4,544

Association Fee Frequency: Monthly

Tax Year: 2025

Association Fee Includes: Trash, Snow Removal, Lawn/Yard Care

Call us now

School Information

High School District: Grand Rapids

Miscellaneous

Road Surface Type: Paved

CrossStreet: Lafayette and Crescent

Listing Terms: Cash, Conventional

Call us now