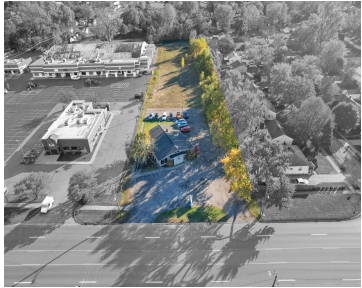


2561, ELIZABETH LAKE, WATERFORD, MI, 48328

https://tuckerbenner.com



\$450,000



Positioned along the busy Elizabeth Lake Road corridor, this established medical office offers exceptional visibility and convenience in the heart of Waterford Township. Home to an active pediatric practice, the property is already configured for medical use—featuring multiple exam rooms, a welcoming reception area with separate sick and well sides, dedicated lab space, and a [...]

- 3 baths
- Office
- Commercial Sale
- Active



Basics

Category: Commercial Sale

Status: Active

Lot size: 1.9 sq ft

Bathrooms Full: 3

Business Type: Professional/Office

Type: Office

Bathrooms: 3 baths

Year built: 1962

Lot Size Acres: 1.9 acres

County: Oakland

Call us now



Phone: (231)730-8781

Email: tuckerbennerteam@gmail.com

Address: 2747 Lakeshore Drive, Twin Lake, MI 49457



Building Details

Building Area Total: 2500 sq ft

Construction Materials: Brick

StoriesTotal: 2253

Number Of Buildings: 1

Number Of Units Total: 1

Heating: Forced Air

Foundation Details: Block

Amenities & Features

Inclusions: Real Estate

Utilities: Phone Available, Natural Gas Available, Electricity Available, Cable Available, Phone Connected, Natural Gas Connected, Electricity Connected, Cable Connected, Storm Sewer

Interior Features:
Broadband

Cooling: Central Air

Fees & Taxes

Tax Assessed Value: \$174,260

Tax Year: 2024

Tax Annual Amount: \$9,558

School Information

High School District: Waterford

Miscellaneous

Road Surface Type: Paved

CrossStreet: Elizabeth Lake Road

Listing Terms: Conventional, Cash

Call us now



Phone: (231)730-8781

Email: tuckerbennerteam@gmail.com

Address: 2747 Lakeshore Drive, Twin Lake, MI 49457

