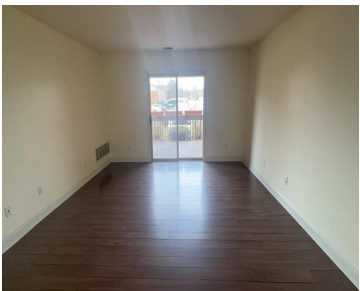


2592, EAGLES, YPSILANTI, MI, 48197

https://tuckerbenner.com

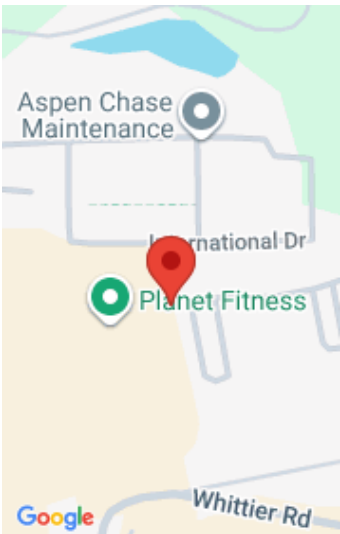


\$220,000



This spacious 2-bedroom, 2 full-bath home is a must see! Located just minutes from Eastern Michigan University, Saint Joseph Hospital, and only 15 minutes to the University of Michigan, you'll love the convenience of this unbeatable location. Featuring an open floor plan, beautiful first-floor living space, and plenty of room to spread out, this condo [...]

- 2 beds
- 2 baths
- Condominium
- Residential
- Active
- 1030 sq ft



Call us now

Phone: (231)730-8781
Email: tuckerbennerteam@gmail.com
Address: 2747 Lakeshore Drive, Twin Lake, MI 49457

Basics

Category: Residential

Status: Active

Bathrooms: 2 baths

Lot size: 0.03 sq ft

Subdivision Name: Stadium Meadows

Lot Size Acres: 0.03 acres

County: Washtenaw

Type: Condominium

Bedrooms: 2 beds

Area: 1030 sq ft

Year built: 2000

Bathrooms Full: 2

Rooms Total: 7

Building Details

Building Area Total: 1030 sq ft

Construction Materials: Aluminum Siding, Brick

Architectural Style: Ranch

Sewer: Public Sewer

Heating: Forced Air

Stories: 1

Basement: Other

Amenities & Features

Laundry Features: In Unit, Laundry Room

WaterSource: Public

Appliances: Washer, Refrigerator, Range, Microwave, Dryer, Dishwasher

Exterior Features: Patio

Cooling: Central Air

Fees & Taxes

Tax Assessed Value: \$71,000

Association Fee Frequency: Monthly

Association Fee: \$230

Tax Year: 2024

Tax Annual Amount: \$6,141.23

Association Fee Includes: Water, Trash, Snow Removal, Sewer, Lawn/Yard Care

Call us now

School Information

High School District: Ypsilanti	HighSchool: Ypsilanti School District
Middle Or Junior School: Ypsilanti School District	Elementary School: Ypsilanti School District

Miscellaneous

Road Surface Type: Paved	CrossStreet: N Hewitt & Stadium View
Listing Terms: Cash, FHA, VA Loan, Conventional	

Call us now