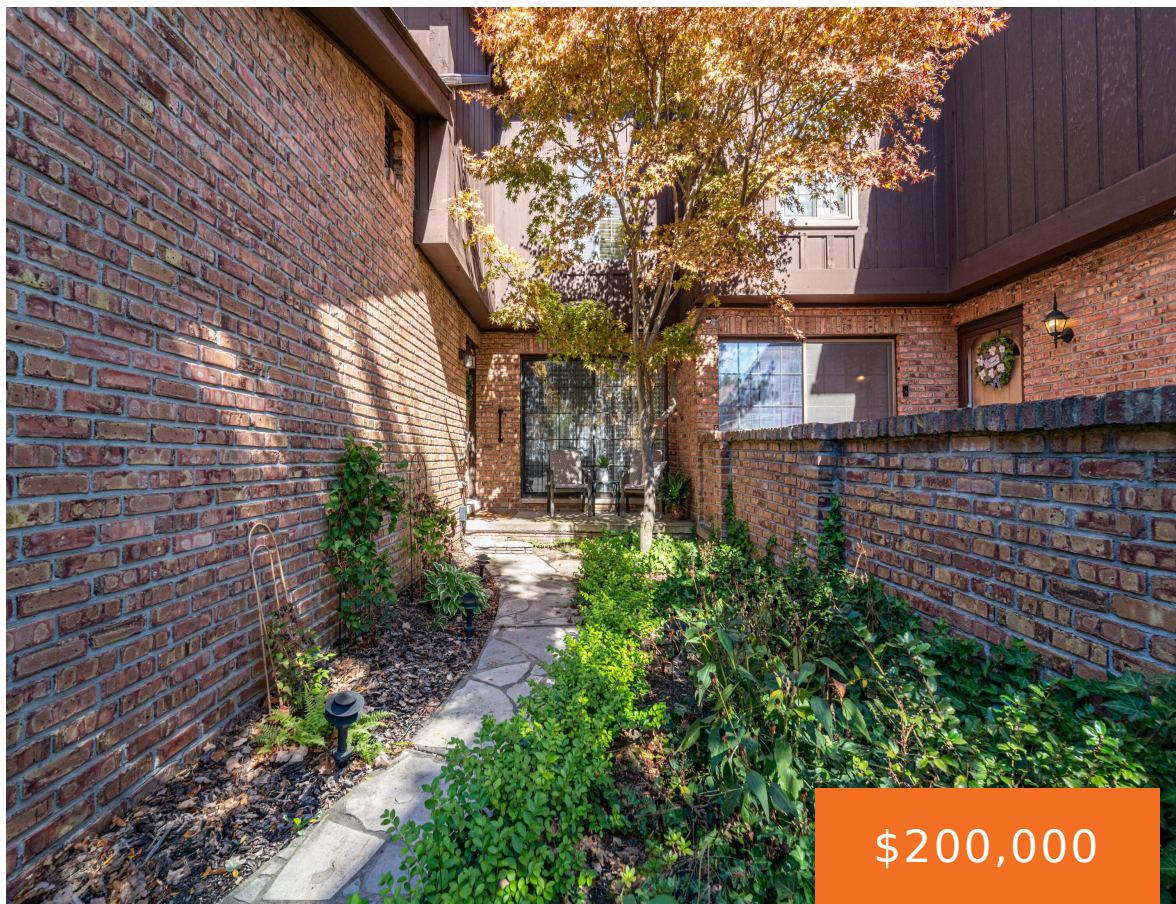


# 26200, SUMMERDALE, SOUTHFIELD, MI, 48033

<https://tuckerbenner.com>

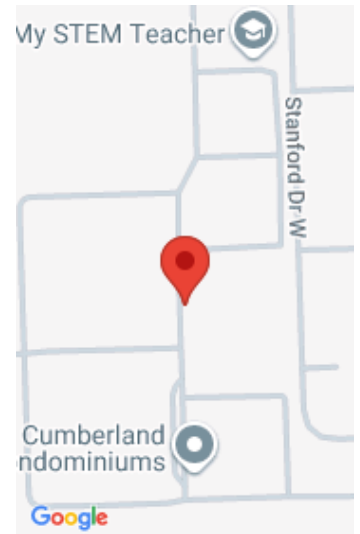


\$200,000

Discover an excellent opportunity to own this well-maintained and spacious 3-bedroom, 2.1-bathroom condominium in Southfield, on the border of Farmington Hills. As you arrive, you'll be greeted by a charming, gated, private front patio and covered porch — perfect for enjoying your morning coffee or relaxing outdoors. Step inside to a welcoming foyer that leads [...]



- 3 beds
- 3 baths
- Condominium
- Residential
- Active
- 1484 sq ft



## Call us now

Phone: (231)730-8781  
Email: [tuckerbennerteam@gmail.com](mailto:tuckerbennerteam@gmail.com)  
Address: 2747 Lakeshore Drive, Twin Lake, MI 49457



# Basics

<b>Category:</b> Residential	<b>Type:</b> Condominium
<b>Status:</b> Active	<b>Bedrooms:</b> 3 beds
<b>Bathrooms:</b> 3 baths	<b>Area:</b> 1484 sq ft
<b>Lot size:</b> 0 sq ft	<b>Year built:</b> 1973
<b>Subdivision Name:</b> Cumberland Condominium	<b>Bathrooms Full:</b> 2
<b>Lot Size Acres:</b> 0 acres	<b>Rooms Total:</b> 10
<b>County:</b> Oakland	<b>Bathrooms Half:</b> 1

# Building Details

<b>Building Area Total:</b> 1484 sq ft	<b>Construction Materials:</b> Brick, Wood Siding
<b>Sewer:</b> Public	<b>Heating:</b> Forced Air
<b>Stories:</b> 2	<b>Roof:</b> Shingle
<b>Basement:</b> Full	

# Amenities & Features

<b>Laundry Features:</b> In Basement	<b>Flooring:</b> Carpet, Linoleum
<b>Utilities:</b> Phone Connected, Natural Gas Connected, Cable Connected, High-Speed Internet	<b>Association Amenities:</b> Clubhouse, Pets Allowed, Pool, Tennis Court(s)
<b>Parking Features:</b> Garage Faces Front, Garage Door Opener, Attached	<b>Garage Spaces:</b> 1
<b>WaterSource:</b> Public	<b>Appliances:</b> Dishwasher, Disposal, Dryer, Microwave, Range, Refrigerator, Washer
<b>Interior Features:</b> Garage Door Opener, Pantry	<b>Window Features:</b> Screens, Window Treatments
<b>Patio And Porch Features:</b> Covered, Patio	<b>Cooling:</b> Central Air

# Fees & Taxes

Call us now

**Tax Assessed Value:** \$31,546

**Association Fee:** \$558.96

**Tax Annual Amount:** \$1,856.24

**Association Fee Frequency:** Monthly

**Tax Year:** 2024

**Association Fee Includes:** Water, Trash, Snow Removal,  
Sewer, Lawn/Yard Care

## School Information

**High School District:** Southfield

## Miscellaneous

**Road Surface Type:** Paved

**Listing Terms:** Cash, Conventional

**CrossStreet:** Inkster and 11 Mile

**Call us now**



Phone: (231)730-8781

Email: tuckerbennerteam@gmail.com

Address: 2747 Lakeshore Drive, Twin Lake, MI 49457

