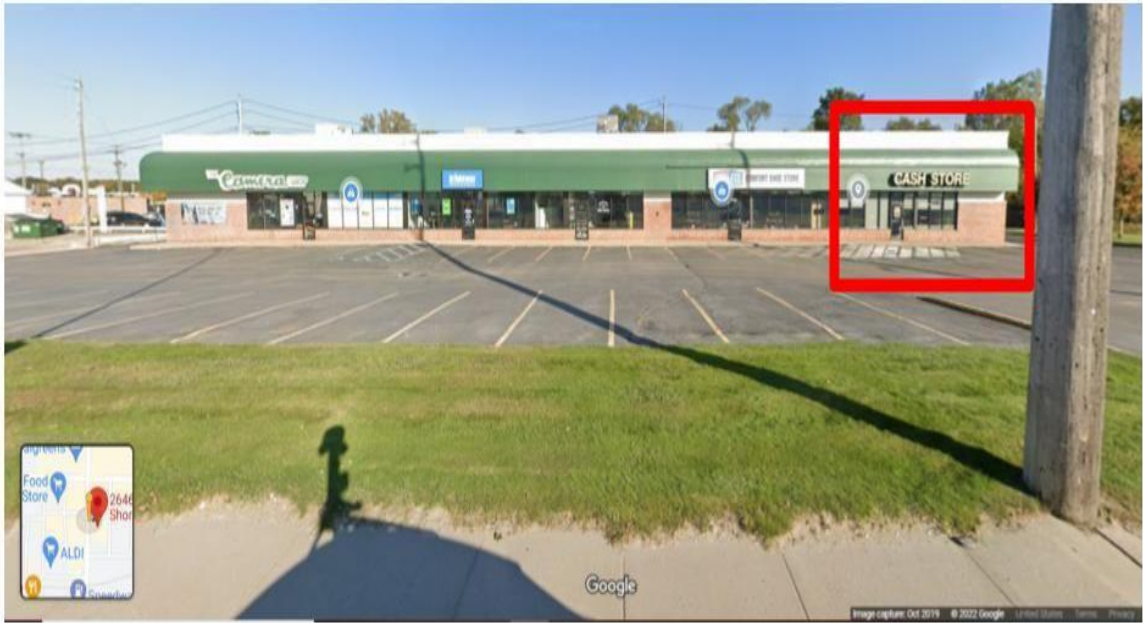


2646, HENRY, NORTON SHORES, MI, 49441

https://tuckerbenner.com



\$2,666

Located on busy Henry St. in Norton Shores. With a AADT at 21,770! Large commercial retail unit with its own lobby, waiting area, teller space, cash room, 2 offices, a break room and one bathroom. Very tall ceilings with spacious rooms. This unit was once a cash advance location. Tenant pays all utilities Rent includes [...]

- 0 baths
- Retail/Commercial
- Commercial Lease
- Active



Basics



Call us now

Phone: (231)730-8781
 Email: tuckerbennerteam@gmail.com
 Address: 2747 Lakeshore Drive, Twin Lake, MI 49457



Category: Commercial Lease **Type:** Retail/Commercial

Status: Active

Bathrooms: 0 baths

Lot size: 0.49 sq ft

Year built: 1992

Lot Size Acres: 0.49 acres

Business Type: Bar/Tavern/Lounge, Restaurant, Professional Service, Professional/Office, Retail

County: Muskegon

Building Details

Building Area Total: 2000 sq ft

Construction Materials: Brick, Block

Sewer: Public Sewer

Heating: Forced Air

Roof: Concrete

Number Of Buildings: 1

Amenities & Features

Utilities: Telephone, Public Water, Public Sewer, Natural Gas Connected, Electricity Available, Natural Gas Available **WaterSource:** Public

Fireplaces Total: 1

School Information

High School District: Mona Shores

Miscellaneous

CrossStreet: Henry St. & Sherman Blvd



Call us now

Phone: (231)730-8781

Email: tuckerbennerteam@gmail.com

Address: 2747 Lakeshore Drive, Twin Lake, MI 49457

