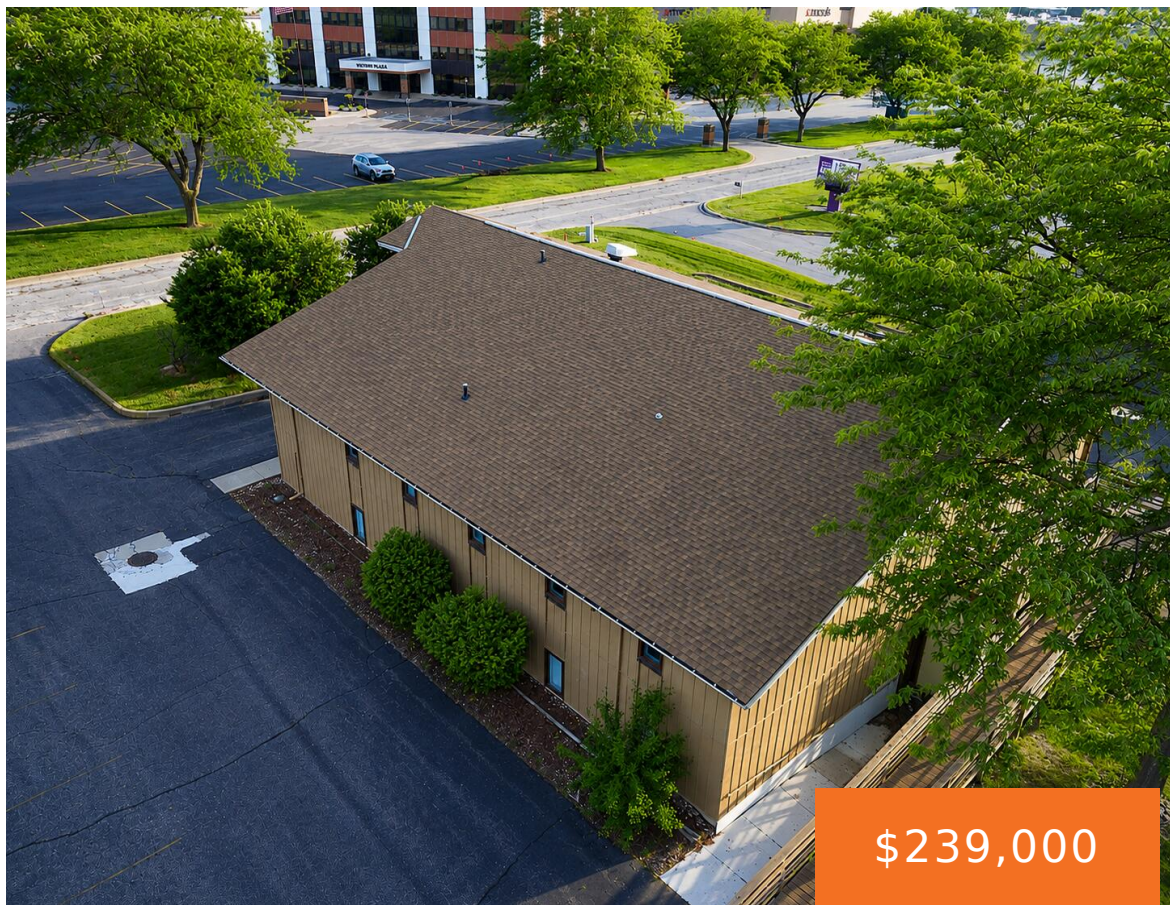
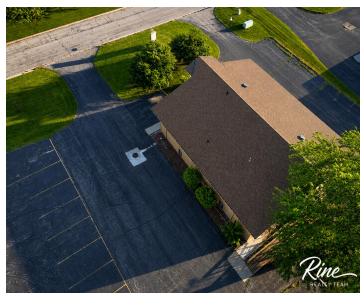


2650, MCLEOD, SAGINAW, MI, 48604

https://tuckerbenner.com



\$239,000



Position your business for success in this versatile 7,172-square-foot commercial building located just off the Tittabawassee Corridor near Fashion Square and less than a mile from I-675. Designed for flexibility, the property features 27 private offices/exam rooms, 2 separate lobbies and reception areas, 6 half baths, and 4 kitchenettes (2 on each floor), making it [...]

- 6 baths
- Office
- Commercial Sale
- Active



Basics

Category: Commercial Sale

Status: Active

Lot size: 0.61 sq ft

Bathrooms Full: 6

Business Type: Professional/Office, Professional Service

Type: Office

Bathrooms: 6 baths

Year built: 1981

Lot Size Acres: 0.61 acres

County: Saginaw

Call us now



Phone: (231)730-8781
 Email: tuckerbennerteam@gmail.com
 Address: 2747 Lakeshore Drive, Twin Lake, MI 49457



Building Details

Building Area Total: 7172 sq ft

Construction Materials: Wood Siding

Stories Total: 2

Roof: Composition

Number Of Buildings: 1

Number Of Units Total: 1

Heating: Forced Air

Building Features: Multi User Facility

Foundation Details: Slab

Amenities & Features

Parking Total: 40

Utilities: Electricity Connected

Inclusions: Non-Applicable

Cooling: Central Air

Fees & Taxes

Tax Assessed Value: \$135,800

Tax Year: 2025

Tax Annual Amount: \$7,546.78

School Information

High School District: Saginaw Twp

Miscellaneous

Road Surface Type: Paved

CrossStreet: McLeod Drive Bay Rpad (M-84)

Listing Terms: Conventional, Cash

Call us now



Phone: (231)730-8781

Email: tuckerbennerteam@gmail.com

Address: 2747 Lakeshore Drive, Twin Lake, MI 49457

