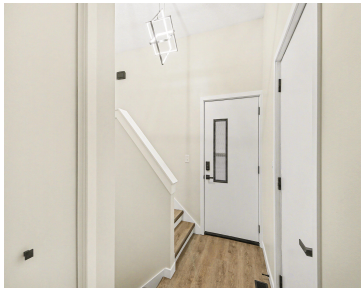


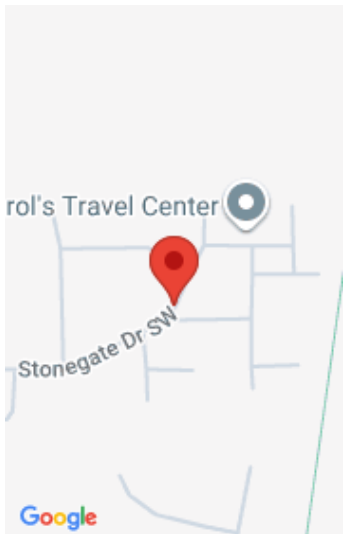
2671, STONEBLUFF, WYOMING, MI, 49519

<https://tuckerbenner.com>



Welcome home to this fully remodeled 2-bed, 2-bath condo in the heart of Wyoming — just 15 minutes from downtown. Updated from top to bottom, it features modern finishes, granite countertops, stainless steel appliances, added crown on cabinetry, fresh trim, and a walk-in pantry. Natural light pours in through the skylight, creating a warm, open [...]

- 2 beds
- 2 baths
- Condominium
- Residential
- Active
- 670 sq ft



Basics

Category: Residential

Status: Active

Bathrooms: 2 baths

Year built: 1985

Lot Size Acres: 0 acres

County: Kent

Type: Condominium

Bedrooms: 2 beds

Area: 670 sq ft

Bathrooms Full: 2

Rooms Total: 3

Building Details

Building Area Total: 670 sq ft

Architectural Style: Ranch

Heating: Forced Air

Basement: Daylight

Construction Materials: Vinyl Siding

Sewer: Public

Stories: 1

Amenities & Features

Laundry Features: In Basement

Association Amenities: Pets Allowed

Garage Spaces: 1

Appliances: Dishwasher, Disposal, Dryer, Microwave, Range, Refrigerator, Washer

Lot Features: Sidewalk

Cooling: Central Air

Utilities: Natural Gas Available, Cable Available, Natural Gas Connected

Parking Features: Attached

WaterSource: Public

Interior Features: Ceiling Fan(s), Pantry

Patio And Porch Features: Patio

Fees & Taxes

Call us now

Tax Assessed Value: \$44,781

Association Fee: \$245

Tax Annual Amount: \$1,703

Association Fee Frequency: Monthly

Tax Year: 2025

Association Fee Includes: Water, Trash, Snow Removal,
Sewer, Lawn/Yard Care

School Information

High School District: Wyoming

Miscellaneous

Road Surface Type: Paved

CrossStreet: Wentworth and Stonegate

Listing Terms: Cash, FHA, VA Loan, Conventional

Call us now



Phone: (231)730-8781

Email: tuckerbennerteam@gmail.com

Address: 2747 Lakeshore Drive, Twin Lake, MI 49457

