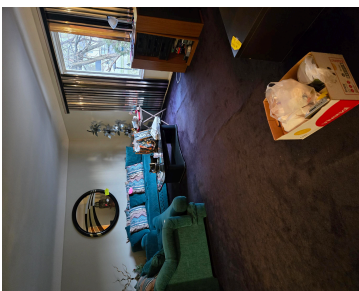
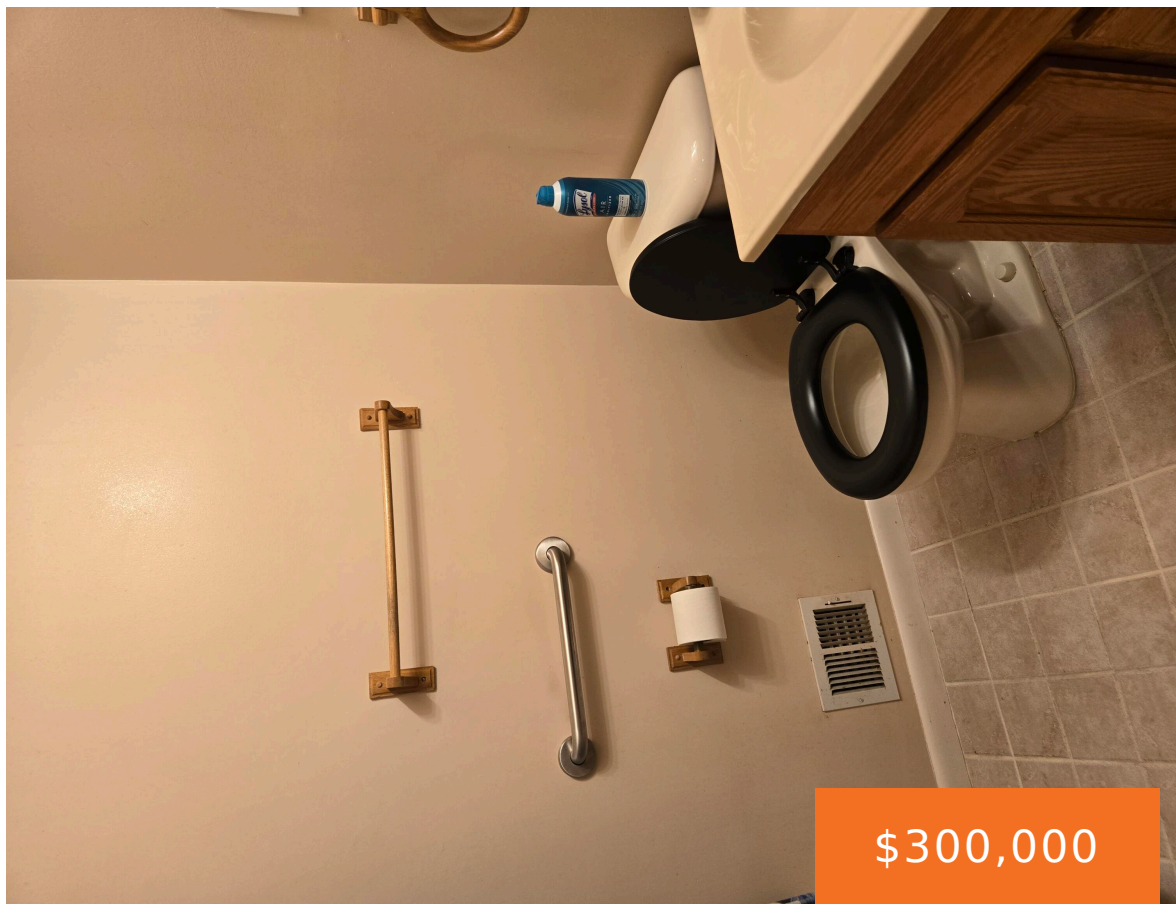


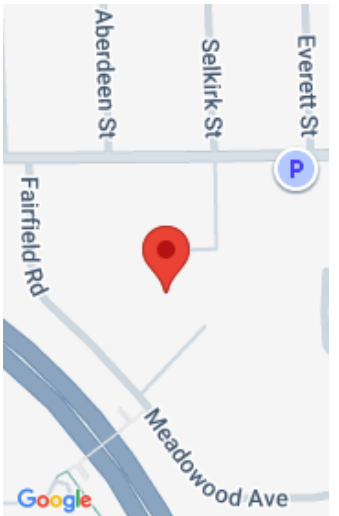
26845, GREENLEIGH, SOUTHFIELD, MI, 48076

https://tuckerbenner.com



Looking for seclusion or privacy, this is the one. A beautiful brick ranch tucked away in a secluded cul-de-sac. It has 3 spacious bedrooms and 3 full baths. Finished basement with wet bar for entertaining, office for work at home and space to play or workout. Egress windows, a deck and a nice size fenced [...]

- 1 bed
- 3 baths
- Single Family Residence
- Residential
- Active
- 1999 sq ft



Call us now

Basics

Category: Residential

Status: Active

Bathrooms: 3 baths

Lot size: 0.59 sq ft

Bathrooms Full: 3

Rooms Total: 8

Type: Single Family Residence

Bedrooms: 1 bed

Area: 1999 sq ft

Year built: 1980

Lot Size Acres: 0.59 acres

County: Oakland

Building Details

Building Area Total: 1399 sq ft

Architectural Style: Ranch

Heating: Forced Air

Roof: Asphalt

Construction Materials: Brick

Sewer: Public

Stories: 1

Basement: Full

Amenities & Features

Laundry Features: In Basement

Flooring: Carpet, Ceramic Tile, Laminate

Association Amenities: Pets Allowed

Parking Features: Garage Faces Front, Garage Door Opener, Attached

WaterSource: Public

Interior Features: Garage Door Opener, Eat-in Kitchen

Patio And Porch Features: Deck

Electric: Generator

Utilities: Natural Gas Available, Electricity Available, Natural Gas Connected

Fencing: Fenced Back

Garage Spaces: 2

Appliances: Dishwasher, Disposal, Dryer, Microwave, Range, Refrigerator, Washer

Lot Features: Cul-De-Sac

Cooling: Central Air

Fees & Taxes

Call us now

Tax Assessed Value: \$74,538
Tax Annual Amount: \$4,642

Tax Year: 2024

School Information

High School District: Southfield

Miscellaneous

Road Surface Type: Paved

CrossStreet: Fairfield / Meadowood

Listing Terms: Cash, Conventional

Call us now