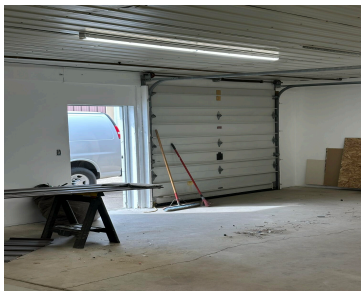


2685, EDWARD STREET, JENISON, MI, 49428
<https://tuckerbenner.com>



Perfect temperature controlled space for warehouse, storage and even office possibilities. Contractors welcome! Heated garage and storage area attached to a newly updated warehouse/studio/storage area. New Heat/AC and even it's own bathroom! This is ready for you to move in! ASAP. 1340sqft total space! 9' height garage door. This unit is separate and secure from [...]

- 0 baths
- Industrial
- Commercial Lease
- Active



Basics

Category: Commercial Lease **Type:** Industrial
Status: Active **Bathrooms:** 0 baths
Lot size: 0.48 sq ft **Year built:** 1986
Lot Size Acres: 0.48 acres **Business Type:** Storage, Recreation, Distribution
County: Ottawa



Call us now

Phone: (231)730-8781
Email: tuckerbennerteam@gmail.com
Address: 2747 Lakeshore Drive, Twin Lake, MI 49457



Building Details

Building Area Total: 1340 sq ft

Heating: Forced Air

Roof: Composition

Number Of Buildings: 1

Construction Materials: Aluminum Siding

Building Features: Barrier Free, Clearspan

Foundation Details: Slab

Amenities & Features

Parking Total: 2

Parking Features: Asphalt, Driveway

Fireplaces Total: 1

Utilities: Natural Gas Connected, Electricity Connected

Interior Features: Broadband

Cooling: Central Air

School Information

High School District: Jenison

Miscellaneous

Road Surface Type: Paved

Tenant Pays: Electric, Janitorial, Gas, Common Area Maintenance, Building Insurance

CrossStreet: San Ru and Edward Street



Call us now

Phone: (231)730-8781

Email: tuckerbennerteam@gmail.com

Address: 2747 Lakeshore Drive, Twin Lake, MI 49457

