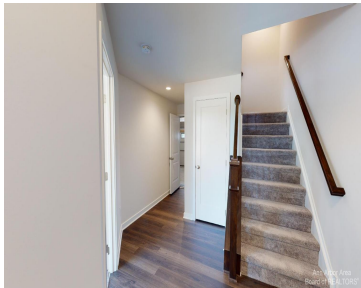
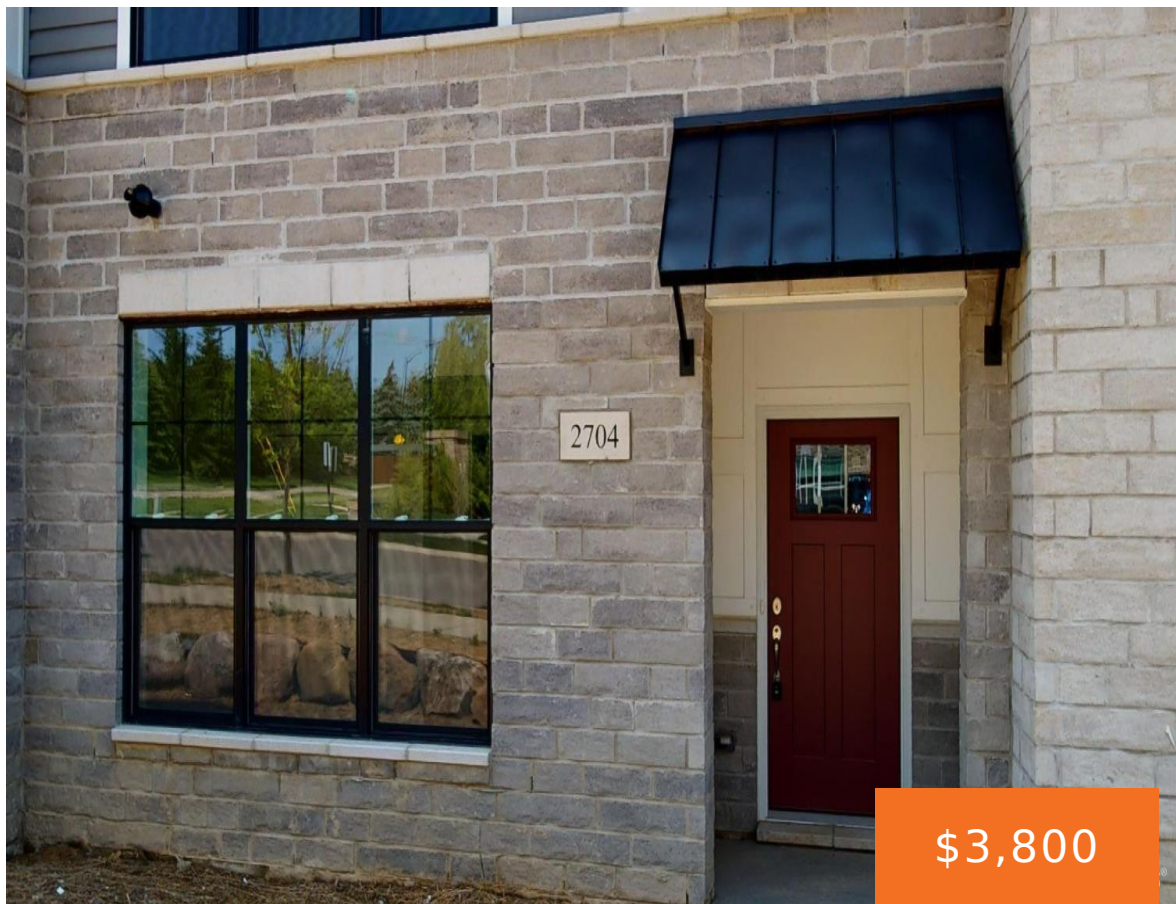


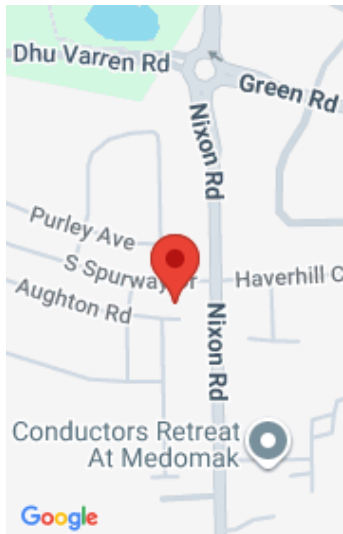
2704, SPURWAY, ANN ARBOR, MI, 48105

https://tuckerbenner.com



Upstairs are three bedrooms, including the primary suite with a walk in closet and a full luxury bathroom, two additional bedrooms, a second full bath, and the washer/dryer. The application fee is \$40 per adult.

- 4 beds
- 4 baths
- Condominium
- Residential Lease
- Active
- 2186 sq ft



Call us now

Phone: (231)730-8781
Email: tuckerbennerteam@gmail.com
Address: 2747 Lakeshore Drive, Twin Lake, MI 49457

Basics

Category: Residential Lease
Status: Active
Bathrooms: 4 baths
Lot size: 0 sq ft
Bathrooms Full: 3
County: Washtenaw

Type: Condominium
Bedrooms: 4 beds
Area: 2186 sq ft
Year built: 2021
Lot Size Acres: 0 acres
Bathrooms Half: 1

Building Details

Heating: Forced Air **Stories:** 3

Amenities & Features

Parking Features: Attached **Garage Spaces:** 2
Cooling: Central Air

School Information

High School District: Ann Arbor **HighSchool:** Skyline High School
Middle Or Junior School: Clague Middle School **Elementary School:** Logan Elementary School

Miscellaneous

Call us now

CrossStreet: Nixon and Dhu Varren

Tenant Pays: Cable/Satellite, Electric, Heat, Internet Access

Owner Pays: Association Fees, Lawn/Yard Care, Trash, Sewer, Snow Removal, Taxes, Water

Call us now



Phone: (231)730-8781
Email: tuckerbennerteam@gmail.com
Address: 2747 Lakeshore Drive, Twin Lake, MI 49457

