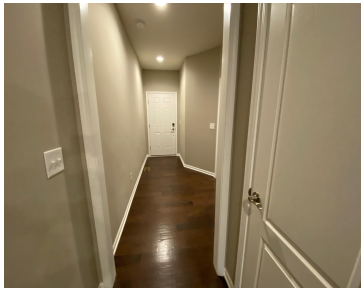


2757, POLSON, ANN ARBOR, MI, 48105  
https://tuckerbenner.com



AVAILABLE FOR SALE OR RENT. If interested in renting, please call John at 734-358-7895. Light filled and open 3 bedroom 3 bath ranch. This North Sky York model features a gourmet kitchen with upgraded stainless steel appliances, ample pantry space, extra large island with pendant lighting and granite countertops. Engineered hardwood floors throughout the entry, [...]

- 3 beds
- 3 baths
- Single Family Residence
- Residential
- Active
- 1702 sq ft



Call us now

Phone: (231)730-8781  
Email: tuckerbennerteam@gmail.com  
Address: 2747 Lakeshore Drive, Twin Lake, MI 49457

# Basics

**Category:** Residential

**Status:** Active

**Bathrooms:** 3 baths

**Year built:** 2019

**Lot Size Acres:** 0 acres

**County:** Washtenaw

**Type:** Single Family Residence

**Bedrooms:** 3 beds

**Area:** 1702 sq ft

**Bathrooms Full:** 3

**Rooms Total:** 5

# Building Details

**Building Area Total:** 1702 sq ft

**Sewer:** Public

**Stories:** 2

**Basement:** Full

**Construction Materials:** Brick, HardiPlank Type

**Heating:** Forced Air

**Roof:** Asphalt

# Amenities & Features

**Laundry Features:** Electric Dryer Hookup, Gas Dryer Hookup, In Unit, Laundry Room, Main Level, Sink, Washer Hookup

**Utilities:** Phone Available, Natural Gas Available, Electricity Available, Cable Available, Natural Gas Connected, Storm Sewer, High-Speed Internet

**Parking Features:** Garage Faces Front, Garage Door Opener

**Garage Spaces:** 2

**Appliances:** Humidifier, Cooktop, Dishwasher, Disposal, Dryer, Microwave, Oven, Range, Refrigerator, Washer

**Lot Features:** Recreational, Sidewalk

**Patio And Porch Features:** Deck

**Cooling:** Central Air

**Flooring:** Carpet, Engineered Hardwood, Tile

**Association Amenities:** Pets Allowed, Playground, Trail(s)

**Fireplace Features:** Gas Log, Living Room

**WaterSource:** Public

**Interior Features:** Ceiling Fan(s), Broadband, Center Island, Eat-in Kitchen, Pantry

**Window Features:** Insulated Windows

**Fireplaces Total:** 1

Call us now



## Fees & Taxes

**Tax Assessed Value:** \$234,805    **Association Fee Frequency:** Monthly  
**Association Fee:** \$220    **Tax Year:** 2025  
**Tax Annual Amount:** \$16,169    **Association Fee Includes:** Snow Removal, Lawn/Yard Care

## School Information

**High School District:** Ann Arbor    **HighSchool:** Skyline High School  
**Middle Or Junior School:** Clague Middle School    **Elementary School:** Northside Elementary School

## Miscellaneous

**Road Surface Type:** Paved    **CrossStreet:** Havre  
**Listing Terms:** Cash, FHA, VA Loan, Conventional

Call us now