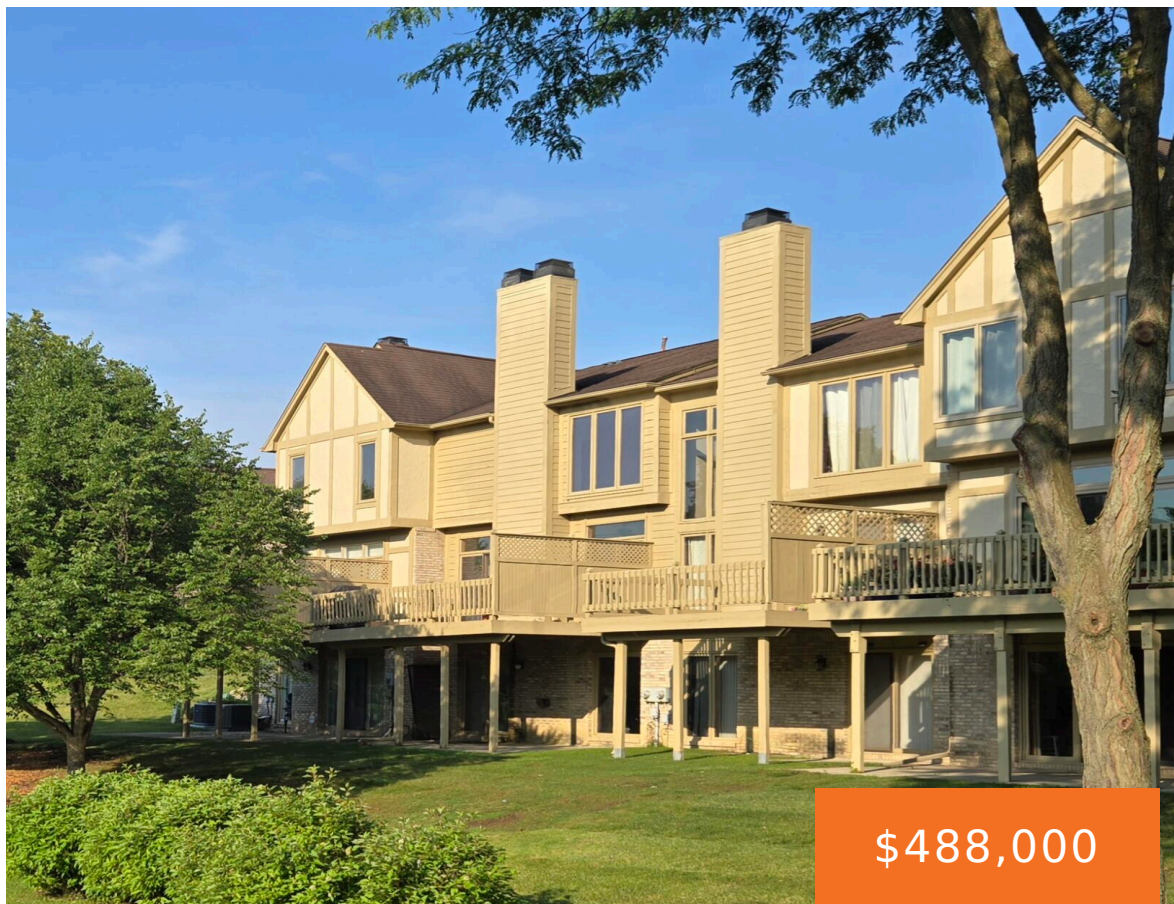


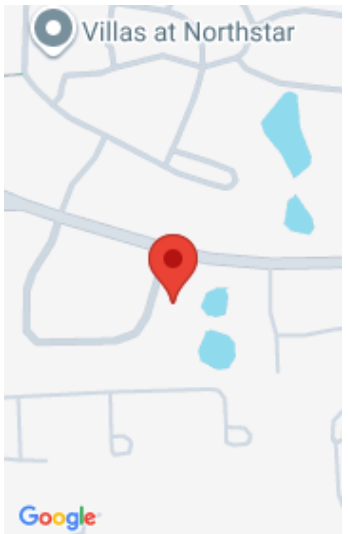
2782, MAITLAND, ANN ARBOR, MI, 48105

https://tuckerbenner.com



Outstanding Northeast Ann Arbor Ashford Place Condo with pond location. New carpet throughout and unit freshly painted. Light filled Living room with fireplace, access to raised wood deck and views of pond. Formal dining room off living room. White Kitchen with center island and pantry. Walk out finished lower level with family room, fireplace, mini [...]

- 3 beds
- 4 baths
- Condominium
- Residential
- Active
- 3003 sq ft



Basics

Category: Residential	Type: Condominium
Status: Active	Bedrooms: 3 beds
Bathrooms: 4 baths	Area: 3003 sq ft
Lot size: 0.04 sq ft	Year built: 1991
Bathrooms Full: 3	Lot Size Acres: 0.04 acres
Rooms Total: 9	County: Washtenaw
Bathrooms Half: 1	

Building Details

Building Area Total: 2235 sq ft	Construction Materials: Brick, HardiPlank Type, Wood Siding
Architectural Style: Tudor	Sewer: Public
Heating: Forced Air	Stories: 3
Roof: Asphalt, Shingle	Basement: Walk-Out Access

Amenities & Features

Laundry Features: Laundry Room, Main Level	Flooring: Carpet, Ceramic Tile, Wood
Utilities: Phone Connected, Cable Connected	Parking Features: Garage Faces Front, Garage Door Opener, Attached
Fireplace Features: Family Room, Living Room	Garage Spaces: 2
WaterSource: Public	Appliances: Dishwasher, Disposal, Dryer, Microwave, Oven, Range, Refrigerator, Washer
Interior Features: Garage Door Opener, Wet Bar, Center Island, Eat-in Kitchen, Pantry	Window Features: Insulated Windows
Patio And Porch Features: Deck, Patio, Porch(es)	Fireplaces Total: 3
Cooling: Central Air	

Call us now

Fees & Taxes

Tax Assessed Value: \$147,864

Association Fee Frequency: Monthly

Association Fee: \$620

Tax Year: 2024

Tax Annual Amount: \$7,922

Association Fee Includes: Other, Water, Snow Removal, Lawn/Yard Care

School Information

High School District: Ann Arbor

Miscellaneous

CrossStreet: Green and Nixon

Listing Terms: Cash, FHA, VA Loan, Conventional

Call us now