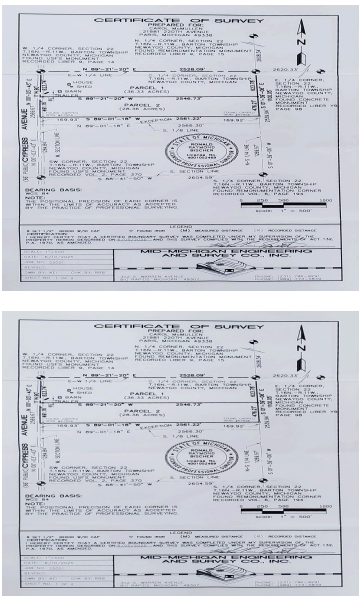


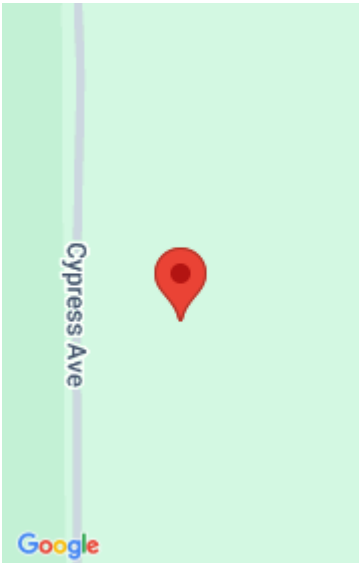
2836, ACRES V/L CYPRESS, PARIS, MI, 49338

<https://tuckerbenner.com>



Looking for the perfect blend of privacy, natural beauty, and build-ready potential? This breathtaking 28.36-acre parcel is your chance to live the country lifestyle you’ve been dreaming of. Whether you’re a hunter, hobby farmer, or future homesteader, this land offers something special for everyone. Tucked away on a peaceful road, the property features gently rolling [...]

- 0 baths
- Acreage
- Land
- Active



Basics

Category: Land

Status: Active

Lot size: 28.36 sq ft

County: Newaygo

Type: Acreage

Bathrooms: 0 baths

Lot Size Acres: 28.36 acres

Building Details

Current Use: Residential, Recreational, Hunting

Amenities & Features

Utilities: Electricity Available, None

Lot Features: Rolling Hills, Buildable, Recreational, Wooded

Fees & Taxes

Tax Assessed Value: \$99,811

Tax Year: 2025

Tax Annual Amount: \$2,464.19

School Information

High School District: Big Jackson

Miscellaneous

CrossStreet: 14 Mile

Listing Terms: Cash, Conventional

Call us now