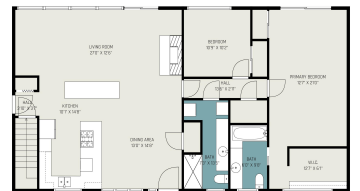


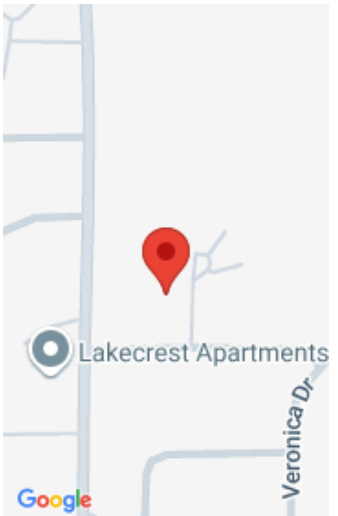
2816, EVERGREEN, ST. JOSEPH, MI, 49085

<https://tuckerbenner.com>



**\*\*Welcome to 2816 Evergreen Drive, a captivating mid-century modern gem, nestled on a peaceful cul-de-sac in St. Joseph, Michigan. Perfectly blending timeless design with modern amenities, this custom home offers 2 bedrooms, 2 full bathrooms on the main level. One of the main level bedrooms features an ensuite bathroom, recently renovated with a beautifully tiled shower. The [...]**

- 3 beds
- 3 baths
- Single Family Residence
- Residential
- Active
- 2570 sq ft



# Basics

<b>Category:</b> Residential	<b>Type:</b> Single Family Residence
<b>Status:</b> Active	<b>Bedrooms:</b> 3 beds
<b>Bathrooms:</b> 3 baths	<b>Area:</b> 2570 sq ft
<b>Lot size:</b> 0.29 sq ft	<b>Year built:</b> 1958
<b>Subdivision Name:</b> BACHELLER'S SUB	<b>Bathrooms Full:</b> 3
<b>Lot Size Acres:</b> 0.29 acres	<b>Rooms Total:</b> 7
<b>County:</b> Berrien	

# Building Details

<b>Building Area Total:</b> 1590 sq ft	<b>Construction Materials:</b> Aluminum Siding, Brick
<b>Architectural Style:</b> Mid-Century Modern	<b>Sewer:</b> Public
<b>Heating:</b> Baseboard, Forced Air	<b>Stories:</b> 1
<b>Roof:</b> Other	<b>Basement:</b> Full, Walk-Out Access

# Amenities & Features

<b>Laundry Features:</b> In Bathroom, Main Level	<b>Electric:</b> Generator
<b>Flooring:</b> Carpet, Wood	<b>Utilities:</b> Phone Available, Natural Gas Available, Electricity Available, Cable Available, Phone Connected, Natural Gas Connected, Storm Sewer, High-Speed Internet
<b>Parking Features:</b> Carport, Attached	<b>Fireplace Features:</b> Family Room, Gas Log, Recreation Room
<b>WaterSource:</b> Public	<b>Appliances:</b> Humidifier, Cooktop, Dishwasher, Dryer, Microwave, Oven, Refrigerator, Washer
<b>Interior Features:</b> Ceiling Fan(s)	<b>Lot Features:</b> Sidewalk, Cul-De-Sac
<b>Window Features:</b> Screens, Insulated Windows, Window Treatments	<b>Patio And Porch Features:</b> Deck, Patio
<b>Fireplaces Total:</b> 2	<b>Cooling:</b> Central Air

Call us now

---

# Fees & Taxes

**Tax Assessed Value:** \$125,593  
**Tax Annual Amount:** \$5,074

**Tax Year:** 2023

---

# School Information


<b>High School District:</b> St. Joseph	<b>HighSchool:</b> St. Joseph High School
<b>Middle Or Junior School:</b> Upton Middle School	<b>Elementary School:</b> Brown Elementary School

---

# Miscellaneous

<b>Road Surface Type:</b> Paved	<b>CrossStreet:</b> Winwood Ave. and Cleveland Ave
<b>Listing Terms:</b> Cash, Conventional	

**Call us now**



Phone: (231)730-8781  
Email: tuckerbennerteam@gmail.com  
Address: 2747 Lakeshore Drive, Twin Lake, MI 49457

