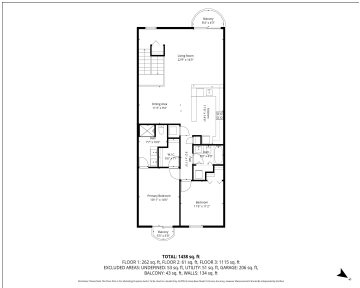


2910, SIGNATURE, ANN ARBOR, MI, 48103

<https://tuckerbenner.com>



This well-maintained 2-bedroom, 2-bath condo in the highly sought-after Cambridge community offers comfort, convenience, and exceptional value. This move-in-ready home includes a versatile 223 sq. ft. lower-level flex space—perfect for a home office, media room, workout area, or den. An additional unfinished basement area provides ample storage. The spacious kitchen features generous counter space, a [...]

- 2 beds
- 2 baths
- Condominium
- Residential
- Active
- 1623 sq ft



Basics

Call us now

Phone: (231)730-8781
Email: tuckerbennerteam@gmail.com
Address: 2747 Lakeshore Drive, Twin Lake, MI 49457



Category: Residential

Status: Active

Bathrooms: 2 baths

Lot size: 0.02 sq ft

Subdivision Name: Cambridge Condominiums

Lot Size Acres: 0.02 acres

County: Washtenaw

Type: Condominium

Bedrooms: 2 beds

Area: 1623 sq ft

Year built: 2002

Bathrooms Full: 2

Rooms Total: 8

Building Details

Building Area Total: 1400 sq ft

Architectural Style: Contemporary, Ranch

Heating: Forced Air

Roof: Shingle, Wood

Construction Materials: Brick, Wood Siding

Sewer: Public

Stories: 1

Basement: Full, Slab, Walk-Out Access

Amenities & Features

Laundry Features: Electric Dryer Hookup, In Unit, Laundry Closet, Main Level, Washer Hookup

Utilities: Cable Available, Natural Gas Connected

Parking Features: Garage Faces Rear, Garage Door Opener, Attached

WaterSource: Public

Interior Features: Ceiling Fan(s), Broadband, Garage Door Opener, Eat-in Kitchen

Window Features: Screens, Insulated Windows, Garden Window, Window Treatments

Exterior Features: Balcony

Flooring: Carpet, Ceramic Tile, Tile

Association Amenities: Pets Allowed

Garage Spaces: 1

Appliances: Dishwasher, Disposal, Dryer, Microwave, Oven, Range, Refrigerator, Washer

Lot Features: Sidewalk, Cul-De-Sac

Patio And Porch Features: Porch(es)

Cooling: Central Air

Fees & Taxes

Call us now



Phone: (231)730-8781

Email: tuckerbennerteam@gmail.com

Address: 2747 Lakeshore Drive, Twin Lake, MI 49457



Tax Assessed Value: \$138,431 **Association Fee Frequency:** Monthly

Association Fee: \$300

Tax Year: 2025

Tax Annual Amount: \$9,342

Association Fee Includes: Water, Trash, Snow Removal, Lawn/Yard Care

School Information

High School District: Ann Arbor

HighSchool: Pioneer High School

Middle Or Junior School: Tappan Middle School

Elementary School: Pattengill Elementary School

Miscellaneous

Road Surface Type: Paved

CrossStreet: Ann Arbor Saline & S. Main St.

Listing Terms: Cash, FHA, VA Loan, Conventional

Call us now



Phone: (231)730-8781

Email: tuckerbennerteam@gmail.com

Address: 2747 Lakeshore Drive, Twin Lake, MI 49457

