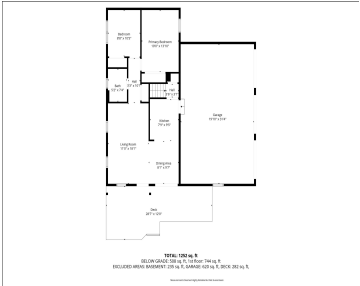


2912, WHITTIER, ANN ARBOR, MI, 48104

https://tuckerbenner.com

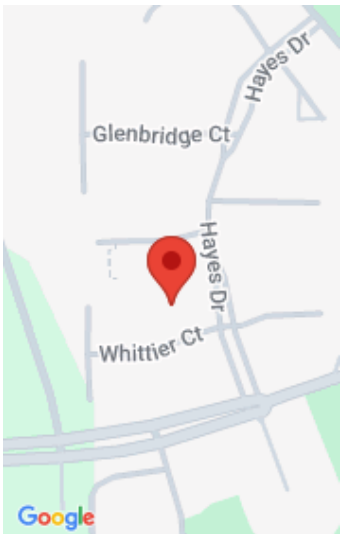


\$275,000



Delightfully maintained ranch condo in a private, park-like setting. This light-filled end unit offers 3 bedrooms, 2 full baths, plus an attached 1-car garage. Beautiful oak flooring and fresh paint enhance the main level, and an updated kitchen features solid-surface counters, marble backsplash, gas cooktop, a new refrigerator (2023), LG dishwasher (2025), and convenient pantry. [...]

- 3 beds
- 2 baths
- Condominium
- Residential
- Active
- 1370 sq ft



Basics

Category: Residential

Status: Active

Bathrooms: 2 baths

Year built: 1977

Bathrooms Full: 2

Rooms Total: 5

Type: Condominium

Bedrooms: 3 beds

Area: 1370 sq ft

Subdivision Name: Georgetown Commons

Lot Size Acres: 0 acres

County: Washtenaw

Building Details

Building Area Total: 820 sq ft

Architectural Style: Ranch

Heating: Forced Air

Roof: Asphalt, Shingle

Construction Materials: Brick

Sewer: Public

Stories: 1

Basement: Full

Amenities & Features

Laundry Features: In Basement, Sink

Association Amenities: End Unit, Pets Allowed

Garage Spaces: 1

Appliances: Humidifier, Cooktop, Dishwasher, Disposal, Dryer, Oven, Refrigerator, Washer

Window Features: Replacement, Window Treatments

Cooling: Central Air

Flooring: Carpet, Tile, Vinyl, Wood

Parking Features: Garage Faces Front, Garage Door Opener, Attached

WaterSource: Public

Interior Features: Ceiling Fan(s), Garage Door Opener, Pantry

Patio And Porch Features: Deck

Fees & Taxes

Call us now

Tax Assessed Value: \$60,155

Association Fee: \$312.64

Tax Annual Amount: \$3,153

Association Fee Frequency: Monthly

Tax Year: 2025

Association Fee Includes: Water, Snow Removal, Sewer, Lawn/Yard Care

School Information

High School District: Ann Arbor

Middle Or Junior School: Tappan Middle School

HighSchool: Pioneer High School

Elementary School: Bryant School

Miscellaneous

Road Surface Type: Paved

Listing Terms: Cash, Conventional

CrossStreet: Hayes Dr

Call us now



Phone: (231)730-8781

Email: tuckerbennerteam@gmail.com

Address: 2747 Lakeshore Drive, Twin Lake, MI 49457

