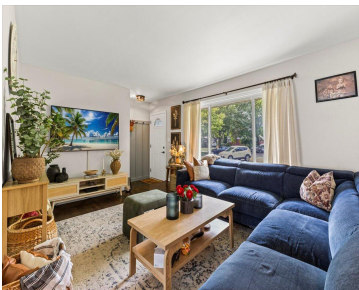
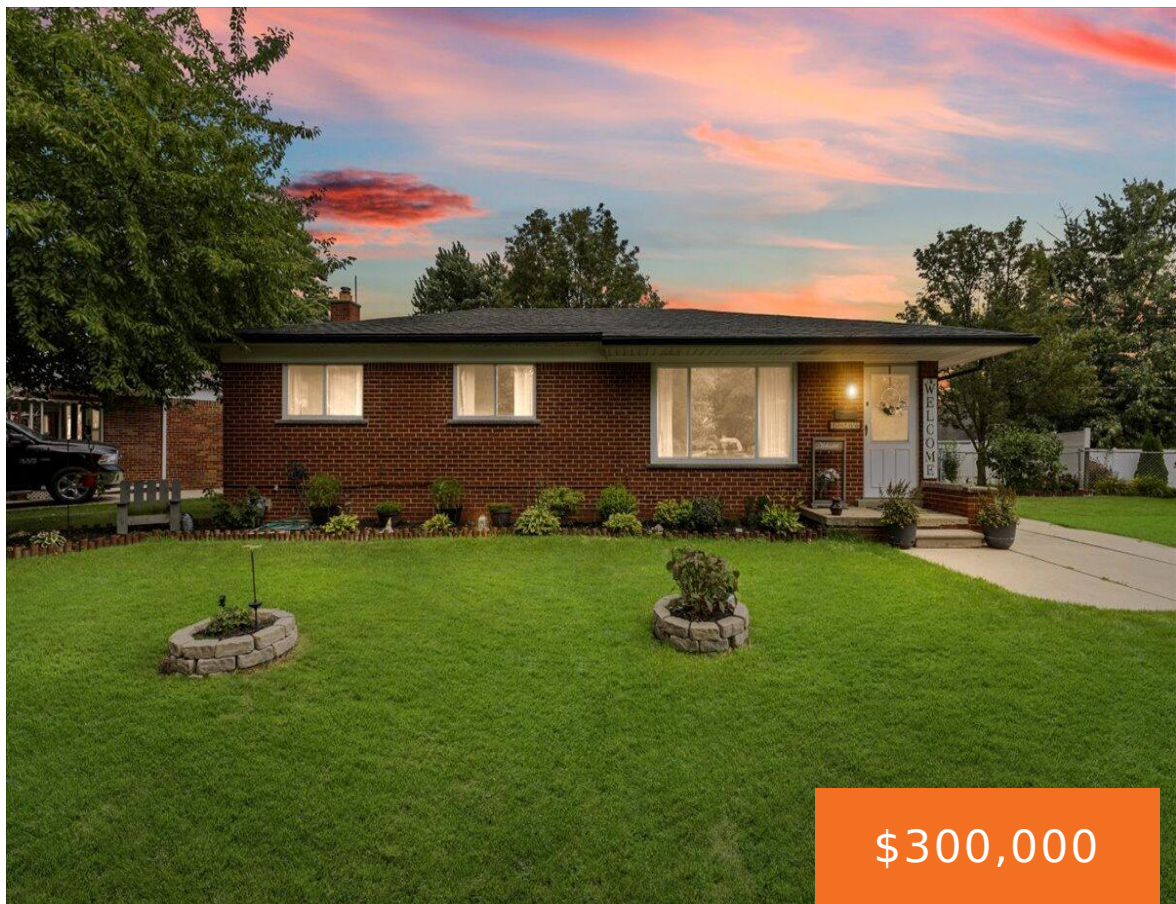


29266, MOULIN, WARREN, MI, 48088

https://tuckerbenner.com



Welcome to 29266 Moulin Ave, a fully updated 3-bedroom, 1.1-bath ranch in Warren with 1030 sq ft and a 2.5-car garage. Inside, you'll find a bright living space, modern kitchen with rich cabinetry, sleek countertops, and stainless appliances, plus beautifully updated bathrooms. The luxurious finished basement is perfect for entertaining, featuring a custom fireplace, wet [...]

- 3 beds
- 2 baths
- Single Family Residence
- Residential
- Active
- 1030 sq ft



Call us now

Phone: (231)730-8781  
Email: tuckerbennerteam@gmail.com  
Address: 2747 Lakeshore Drive, Twin Lake, MI 49457

# Basics

<b>Category:</b> Residential	<b>Type:</b> Single Family Residence
<b>Status:</b> Active	<b>Bedrooms:</b> 3 beds
<b>Bathrooms:</b> 2 baths	<b>Area:</b> 1030 sq ft
<b>Lot size:</b> 0.2 sq ft	<b>Year built:</b> 1960
<b>Bathrooms Full:</b> 1	<b>Lot Size Acres:</b> 0.2 acres
<b>Rooms Total:</b> 3	<b>County:</b> Macomb
<b>Bathrooms Half:</b> 1	

# Building Details

<b>Building Area Total:</b> 1030 sq ft	<b>Construction Materials:</b> Brick
<b>Architectural Style:</b> Ranch	<b>Sewer:</b> Public
<b>Heating:</b> Forced Air	<b>Stories:</b> 1
<b>Roof:</b> Asphalt, Shingle	<b>Basement:</b> Full

# Amenities & Features

<b>Laundry Features:</b> Gas Dryer Hookup, In Basement, Sink, Washer Hookup	<b>Flooring:</b> Tile, Wood
<b>Utilities:</b> Phone Connected, Natural Gas Connected, Cable Connected, High-Speed Internet	<b>Fencing:</b> Chain Link
<b>Parking Features:</b> Garage Faces Front, Garage Door Opener, Detached	<b>Fireplace Features:</b> Other
<b>Garage Spaces:</b> 2.5	<b>WaterSource:</b> Public
<b>Appliances:</b> Humidifier, Bar Fridge, Dishwasher, Disposal, Dryer, Microwave, Refrigerator, Washer	<b>Interior Features:</b> Ceiling Fan(s), Garage Door Opener, Eat-in Kitchen
<b>Patio And Porch Features:</b> Deck, Porch(es)	<b>Exterior Features:</b> Other
<b>Fireplaces Total:</b> 1	<b>Cooling:</b> Central Air

## Call us now

---

# Fees & Taxes

**Tax Assessed Value:** \$100,090  
**Tax Annual Amount:** \$5,377.60

**Tax Year:** 2024

---

# School Information

**High School District:** Warren Woods

---

# Miscellaneous

**Road Surface Type:** Paved

**CrossStreet:** Schoenherr & 12 Mile

**Listing Terms:** Cash, Conventional

**Call us now**



Phone: (231)730-8781  
Email: tuckerbennerteam@gmail.com  
Address: 2747 Lakeshore Drive, Twin Lake, MI 49457

