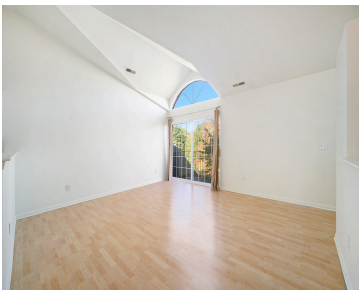


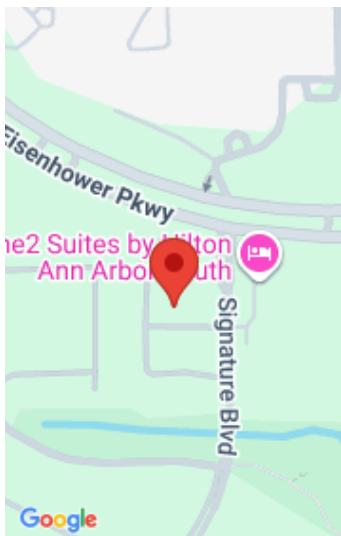
2944, SIGNATURE, ANN ARBOR, MI, 48103

<https://tuckerbenner.com>



This airy condo provides comfort, convenience, and tons of space. The upper main living space features cathedral ceilings and open but distinct living, dining and kitchen spaces. Two bedrooms and two full bathrooms, including one with a stacked washer/dryer, and two balconies round out the main level. Light and bright thanks to the large windows [...]

- 2 beds
- 2 baths
- Condominium
- Residential
- Active
- 1473 sq ft



Call us now

Phone: (231)730-8781  
Email: [tuckerbennerteam@gmail.com](mailto:tuckerbennerteam@gmail.com)  
Address: 2747 Lakeshore Drive, Twin Lake, MI 49457

# Basics

**Category:** Residential

**Status:** Active

**Bathrooms:** 2 baths

**Lot size:** 0 sq ft

**Subdivision Name:** Cambridge Condominiums

**Lot Size Acres:** 0 acres

**County:** Washtenaw

**Type:** Condominium

**Bedrooms:** 2 beds

**Area:** 1473 sq ft

**Year built:** 2003

**Bathrooms Full:** 2

**Rooms Total:** 9

# Building Details

**Building Area Total:** 1473 sq ft

**Architectural Style:** Contemporary, Ranch

**Heating:** Baseboard, Forced Air

**Roof:** Shingle

**Construction Materials:** Brick, Vinyl Siding

**Sewer:** Public

**Stories:** 3

**Basement:** Slab

# Amenities & Features

**Laundry Features:** In Bathroom, In Unit, Upper Level

**Utilities:** Cable Available, Natural Gas Connected, Cable Connected, High-Speed Internet

**Garage Spaces:** 1

**Appliances:** Dishwasher, Dryer, Microwave, Oven, Refrigerator, Washer

**Lot Features:** Sidewalk

**Exterior Features:** Balcony

**Flooring:** Carpet, Laminate, Tile, Vinyl

**Parking Features:** Attached

**WaterSource:** Public

**Interior Features:** Eat-in Kitchen

**Window Features:** Insulated Windows, Window Treatments

**Cooling:** Central Air

# Fees & Taxes

Call us now

**Tax Assessed Value:** \$143,240

**Association Fee:** \$290

**Tax Annual Amount:** \$7,695

**Association Fee Frequency:** Monthly

**Tax Year:** 2025

**Association Fee Includes:** Water, Trash, Snow Removal, Sewer, Lawn/Yard Care

## School Information

**High School District:** Ann Arbor

**HighSchool:** Pioneer High School

**Middle Or Junior School:** Tappan Middle School

**Elementary School:** Pattengill Elementary School

## Miscellaneous

**CrossStreet:** W. Eisenhower

**Listing Terms:** Cash, Conventional

Call us now



Phone: (231)730-8781

Email: tuckerbennerteam@gmail.com

Address: 2747 Lakeshore Drive, Twin Lake, MI 49457

