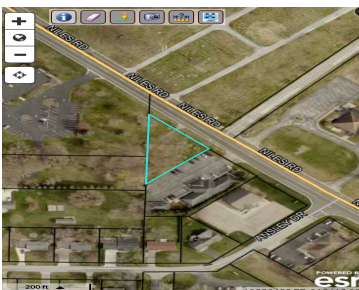
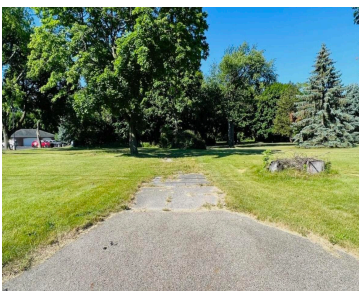
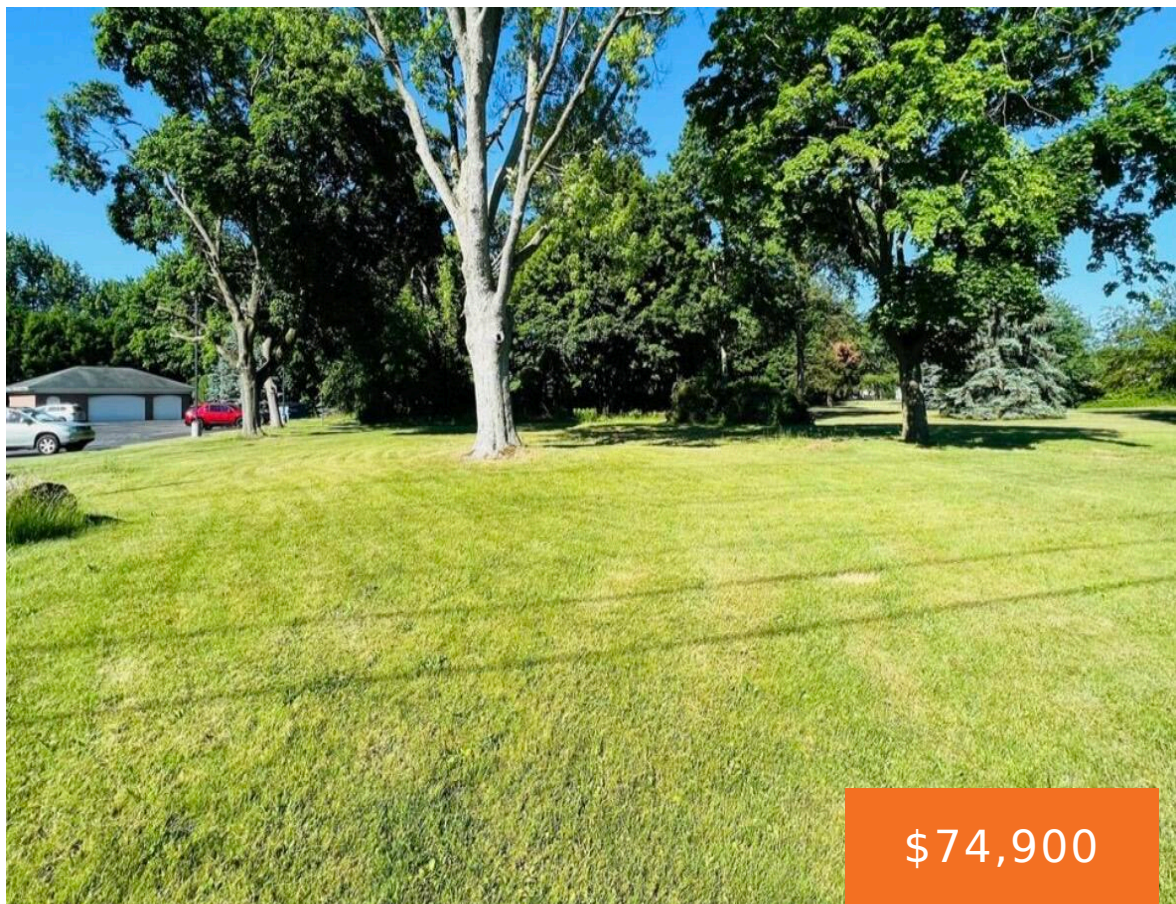


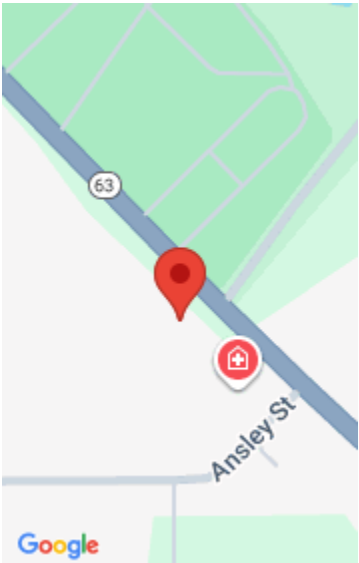
2960, NILES, ST. JOSEPH, MI, 49085

https://tuckerbenner.com



Check out this RARE VACANT COMMERCIAL LOT for sale on the well-traveled Niles Road near everything and only a 1/2 mile from I-94! Over 22,000 vehicles pass thru per day! SO MANY possibilities for this great parcel! Do not miss it!

- 0 baths
- Commercial Land
- Land
- Active



Basics

Category: Land

Status: Active

Lot size: 0.36 sq ft

County: Berrien

Type: Commercial Land

Bathrooms: 0 baths

Lot Size Acres: 0.36 acres

Building Details

Sewer: Public Sewer

Current Use: Commercial

Amenities & Features

Utilities: Natural Gas Available, Electricity Available, Cable Available, Phone Available, None

WaterSource: Public

Lot Features: Level, Buildable

Fees & Taxes

Tax Assessed Value: \$11,366

Tax Year: 2024

Tax Annual Amount: \$1,116

School Information

High School District: St. Joseph

Miscellaneous

Call us now

Road Surface Type: Paved

CrossStreet: Royalton Heights

Listing Terms: Cash, Conventional

Call us now



Phone: (231)730-8781
Email: tuckerbennerteam@gmail.com
Address: 2747 Lakeshore Drive, Twin Lake, MI 49457

