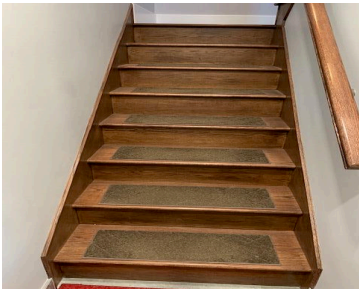
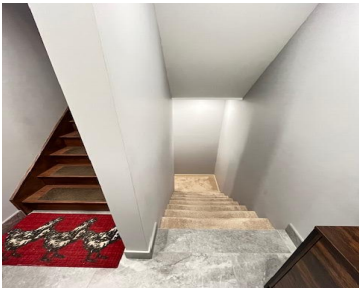


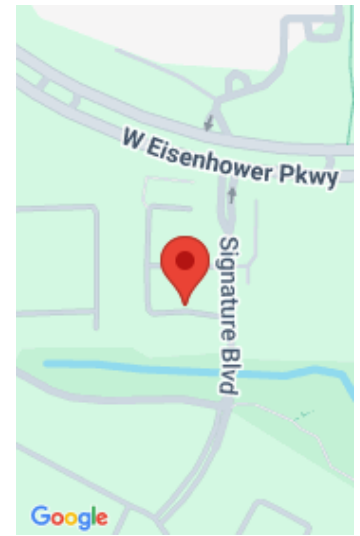
2968, SIGNATURE, ANN ARBOR, MI, 48103

https://tuckerbenner.com



Move-in-Ready 2-bedroom, 2 full-bath CONDO with attached garage and 2 balconies. This condo offers an open floor plan with separate Living, Dining, and Kitchen areas all under cathedral ceilings wi/ new recessed lighting and decorative fan. The master bedroom offers a full ensuite, a walk-in closet, and a private balcony. The guest bedroom includes a [...]

- 2 beds
- 2 baths
- Condominium
- Residential
- Active
- 1282 sq ft



Call us now

Basics

Category: Residential	Type: Condominium
Status: Active	Bedrooms: 2 beds
Bathrooms: 2 baths	Area: 1282 sq ft
Lot size: 0.02 sq ft	Year built: 2003
Bathrooms Full: 2	Lot Size Acres: 0.02 acres
County: Washtenaw	

Building Details

Building Area Total: 1282 sq ft	Construction Materials: Brick, Vinyl Siding
Sewer: Public	Heating: Forced Air
Stories: 2	Basement: Slab

Amenities & Features

Laundry Features: In Bathroom, Main Level, Upper Level	Flooring: Carpet, Ceramic Tile, Engineered Hardwood, Tile
Utilities: Natural Gas Connected, Storm Sewer	Parking Features: Garage Faces Rear, Garage Door Opener, Attached
Garage Spaces: 1	WaterSource: Public
Appliances: Dishwasher, Dryer, Oven, Range, Refrigerator, Washer	Interior Features: Garage Door Opener, Center Island, Eat-in Kitchen
Lot Features: Sidewalk	Window Features: Window Treatments
Patio And Porch Features: Deck, Porch(es), Terrace	Exterior Features: Balcony
Cooling: Central Air	

Fees & Taxes

Call us now

Tax Assessed Value: \$160,217

Association Fee: \$300

Tax Annual Amount: \$8,522.21

Association Fee Frequency: Monthly

Tax Year: 2025

Association Fee Includes: Water, Trash, Snow Removal, Sewer, Lawn/Yard Care

School Information

High School District: Ann Arbor

Middle Or Junior School: Tappan Middle School

HighSchool: Pioneer High School

Elementary School: Pattengill Elementary School

Miscellaneous

Road Surface Type: Paved

Listing Terms: Cash, FHA, VA Loan, Conventional

CrossStreet: Eisenhower Pkwy & Signature Bl

Call us now



Phone: (231)730-8781

Email: tuckerbennerteam@gmail.com

Address: 2747 Lakeshore Drive, Twin Lake, MI 49457