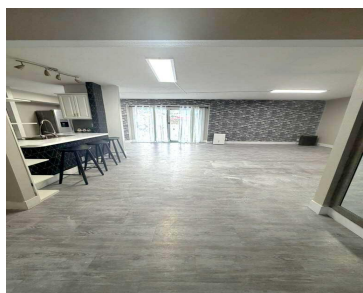


300, FARINGTON, HOLLAND, MI, 49423
<https://tuckerbenner.com>

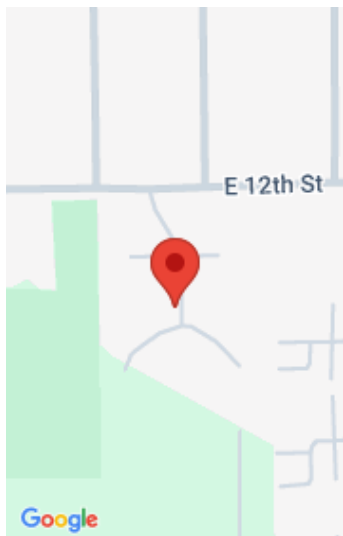


\$199,900

Enjoy low-maintenance living in a convenient Holland location. This 2-bedroom, 1-bath condo offers a comfortable layout and is close to shopping, dining, parks, and major roads for an easy commute. Community services include exterior maintenance, lawn care, and snow removal (per association)



- 2 beds
- 1 bath
- Condominium
- Residential
- Active
- 1108 sq ft



Call us now

Phone: (231)730-8781
Email: tuckerbennerteam@gmail.com
Address: 2747 Lakeshore Drive, Twin Lake, MI 49457

Basics

Category: Residential

Status: Active

Bathrooms: 1 bath

Year built: 1984

Lot Size Acres: 0 acres

County: Ottawa

Type: Condominium

Bedrooms: 2 beds

Area: 1108 sq ft

Bathrooms Full: 1

Rooms Total: 5

Building Details

Building Area Total: 1108 sq ft

Architectural Style: Traditional

Heating: Forced Air

Roof: Composition

Construction Materials: Wood Siding

Sewer: Public

Stories: 1

Basement: Slab

Amenities & Features

Laundry Features: Main Level

Flooring: Laminate

Association Amenities: Pool

Fireplace Features: Living Room, Wood Burning

WaterSource: Public

Interior Features: Garage Door Opener, Pantry

Patio And Porch Features: Patio

Cooling: Central Air

Pool Features: In Ground

Utilities: Electricity Available, Phone Connected, Cable Connected

Parking Features: Detached

Garage Spaces: 1

Appliances: Dishwasher, Dryer, Microwave, Oven, Range, Refrigerator, Washer

Window Features: Screens

Fireplaces Total: 1

Call us now

Fees & Taxes

Tax Assessed Value: \$23,876 **Association Fee Frequency:** Monthly
Association Fee: \$300 **Tax Year:** 2014
Tax Annual Amount: \$2,038.60 **Association Fee Includes:** Other, Trash, Snow Removal, Lawn/Yard Care

School Information

High School District: Holland

Miscellaneous

Road Surface Type: Paved **CrossStreet:** E 12th St. & E 16th St.
Listing Terms: Cash, Conventional

Call us now