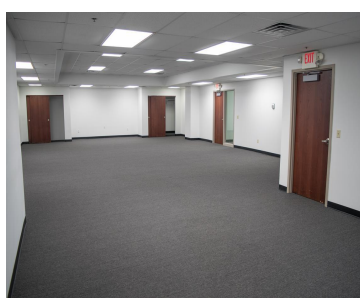
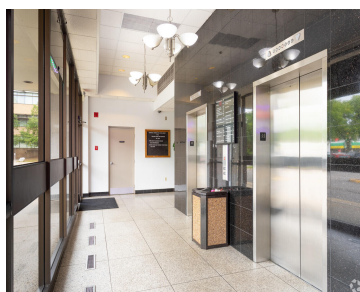


# 301, MICHIGAN, YPSILANTI, MI, 48197

<https://tuckerbenner.com>



Discover the epitome of Ypsilanti's office excellence at the Ypsilanti Commerce Center, located at 301 W Michigan Ave., Ypsilanti, MI 48197. Nestled in the bustling heart of downtown and just minutes from I-94 at Huron, this premier office building offers a superb commercial suite for rent. Impeccably maintained with ample free parking, tenants enjoy round-the-clock [...]

- 0 baths
- Office
- Commercial Lease
- Active



## Basics

**Category:** Commercial Lease

**Status:** Active

**Lot size:** 2.71 sq ft

**Business Type:** Professional/Office

**Type:** Office

**Bathrooms:** 0 baths

**Lot Size Acres:** 2.71 acres

**County:** Washtenaw



### Call us now

Phone: (231)730-8781

Email: [tuckerbennerteam@gmail.com](mailto:tuckerbennerteam@gmail.com)

Address: 2747 Lakeshore Drive, Twin Lake, MI 49457



---

## Building Details

**Building Area Total:** 0 sq ft

**Heating:** Forced Air

**Sewer:** Public Sewer

**Number Of Buildings:** 1

---

## Amenities & Features

**Utilities:** None

**Fireplaces Total:** 1

**WaterSource:** Public

---

## Fees & Taxes

**Tax Assessed Value:** \$1,120,731

**Tax Year:** 2023

---

## School Information

**High School District:** Ypsilanti

---

## Miscellaneous

**CrossStreet:** 301 W. Michigan Ave.



### Call us now

Phone: (231)730-8781

Email: tuckerbennerteam@gmail.com

Address: 2747 Lakeshore Drive, Twin Lake, MI 49457

