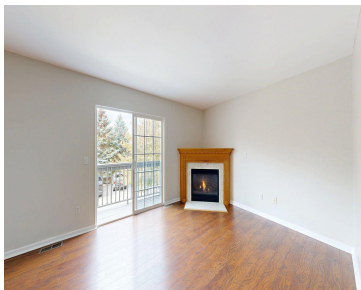
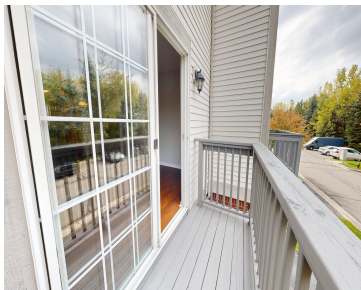
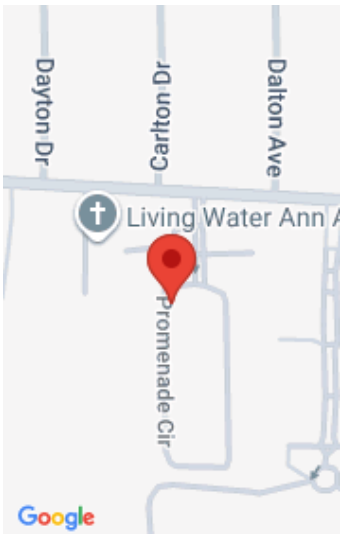


3073, PROMENADE, ANN ARBOR, MI, 48108
<https://tuckerbenner.com>



Available immediately! Come see this delightful 3 bedroom, 2.5 bathroom townhome in popular Madison Place. The spacious kitchen features stainless steel appliances and ample counter and cabinet space. Enjoy gatherings in the generously-sized living/dining area highlighted by a gas fireplace and sliding door to the balcony. The primary bedroom is situated on the second floor, [...]

- 3 beds
- 3 baths
- Condominium
- Residential Lease
- Active
- 1566 sq ft



Call us now

Phone: (231)730-8781
Email: tuckerbennerteam@gmail.com
Address: 2747 Lakeshore Drive, Twin Lake, MI 49457

Basics

Category: Residential Lease
Status: Active
Bathrooms: 3 baths
Lot size: 0 sq ft
Bathrooms Full: 2
County: Washtenaw

Type: Condominium
Bedrooms: 3 beds
Area: 1566 sq ft
Year built: 2001
Lot Size Acres: 0 acres
Bathrooms Half: 1

Building Details

Heating: Forced Air
Basement: Slab
Stories: 3

Amenities & Features

Laundry Features: Laundry Closet, Upper Level
Garage Spaces: 1
Parking Features: Garage Faces Rear, Garage Door Opener, Attached
Cooling: Central Air

School Information

High School District: Ann Arbor
Middle Or Junior School: Scarlett Middle School
HighSchool: Huron High School
Elementary School: Carpenter Elementary School

Miscellaneous

Call us now

CrossStreet: Packard and Esplanade

Owner Pays: Association Fees,
Lawn/Yard Care, Trash, Sewer, Snow
Removal, Taxes, Water

Tenant Pays: A/C, Cable/Satellite, Electric, Heat,
Housekeeping, Internet Access, Linens, Phone, WIFI

Call us now



Phone: (231)730-8781

Email: tuckerbennerteam@gmail.com

Address: 2747 Lakeshore Drive, Twin Lake, MI 49457

