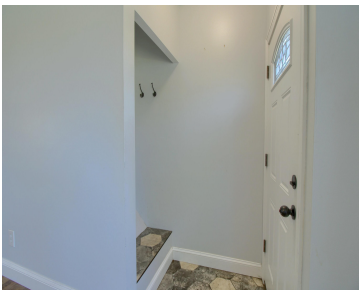


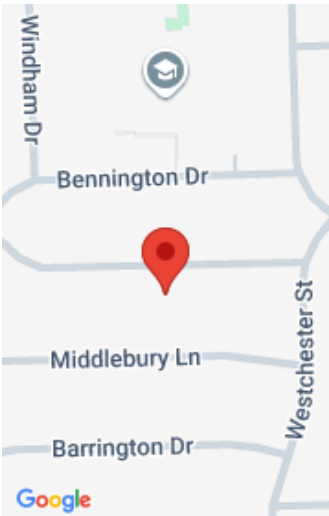
30805, PARKWOOD, WESTLAND, MI, 48186

https://tuckerbenner.com



Adorable Well Appointed & Recently Updated 3 Bedroom Westland ranch is now available! Upon entering into the Large Living Room with Big Picture Windows add lots of natural light. Recently refinished Hardwood Floors carry into the hall and all 3 Bedrooms. Tastefully redone Kitchen with newer tile floors and tons of counter space. Stainless Steel [...]

- 3 beds
- 2 baths
- Single Family Residence
- Residential
- Active
- 895 sq ft



Basics

Category: Residential

Status: Active

Bathrooms: 2 baths

Lot size: 0.13 sq ft

Subdivision Name: Birch Hill Estates Sub 2

Lot Size Acres: 0.13 acres

County: Wayne

Type: Single Family Residence

Bedrooms: 3 beds

Area: 895 sq ft

Year built: 1961

Bathrooms Full: 2

Rooms Total: 19

Building Details

Building Area Total: 895 sq ft

Construction Materials: Brick, Vinyl Siding

Architectural Style: Ranch

Sewer: Public

Heating: Forced Air

Stories: 1

Roof: Asphalt, Shingle

Basement: Full

Amenities & Features

Laundry Features: Electric Dryer Hookup, Gas Dryer Hookup, In Basement, Lower Level, Sink, Washer Hookup

Utilities: Phone Available, Natural Gas Connected, Cable Connected, Storm Sewer, High-Speed Internet

Parking Features: Garage Faces Front, Detached

WaterSource: Public

Flooring: Ceramic Tile, Tile, Wood

Fencing: Fenced Back

Garage Spaces: 2

Appliances: Humidifier, Dishwasher, Disposal, Dryer, Range, Refrigerator, Washer

Interior Features: Eat-in Kitchen

Lot Features: Sidewalk

Window Features: Screens, Window Treatments

Patio And Porch Features: Patio

Cooling: Central Air

Call us now



Fees & Taxes

Tax Assessed Value: \$66,608
Tax Annual Amount: \$3,250

Tax Year: 2024



School Information

| | |
|---------------------------------------------------------------|-----------------------------------------------------|
| High School District: Wayne-Westland | HighSchool: Wayne Memorial High School |
| Middle Or Junior School: Adams Upper Elementary School | Elementary School: Elliott Elementary School |



Miscellaneous

| | |
|---------------------------------------------------------------|---------------------------------------|
| Road Surface Type: Paved | CrossStreet: Merriman & Palmer |
| Listing Terms: Cash, FHA, VA Loan, MSHDA, Conventional | |

Call us now