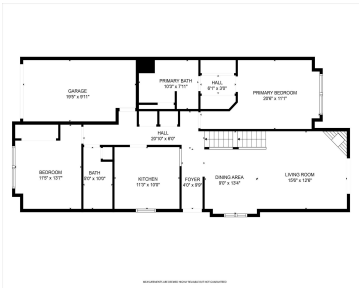




\$349,900



Backing to protected wetlands, this beautifully updated end-unit condo in the highly sought-after Maples of Novi offers privacy and a serene natural setting. With private entry and no shared driveway, the home sits on high elevation. Enjoy southwest exposure, filling the living spaces with bright, natural light and wooded views from the deck. Offering 3 [...]

- 3 beds
- 4 baths
- Condominium
- Residential
- Active
- 2500 sq ft



Basics

Category: Residential

Status: Active

Bathrooms: 4 baths

Lot size: 0 sq ft

Subdivision Name: The Maples of Novi

Lot Size Acres: 0 acres

County: Oakland

Type: Condominium

Bedrooms: 3 beds

Area: 2500 sq ft

Year built: 1994

Bathrooms Full: 4

Rooms Total: 6

Building Details

Building Area Total: 1500 sq ft

Architectural Style: Colonial

Heating: Forced Air

Roof: Asphalt

Construction Materials: Aluminum Siding

Sewer: Public

Stories: 2

Basement: Full, Walk-Out Access

Amenities & Features

Laundry Features: In Basement

Parking Features: Attached

Garage Spaces: 1

Appliances: Dishwasher, Dryer, Microwave, Oven, Range, Washer

Lot Features: Sidewalk, Wooded, Golf Community

Fireplaces Total: 1

Association Amenities: Pool

Fireplace Features: Gas Log, Living Room

WaterSource: Public

Interior Features: Garage Door Opener

Patio And Porch Features: Deck

Cooling: Central Air

Fees & Taxes

Call us now

