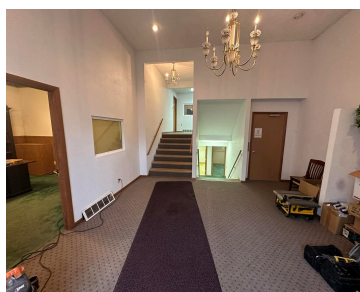


310, GREEN, MARSHALL, MI, 49068

https://tuckerbenner.com



\$300,000



Massive Marshall City Commercial Building, Now Available! This building has 6000 square feet of finished and usable space, plus its own asphalt parking lot! The building has been used as a church for several decades, but has plenty of usable office space, a fully functional elevator, and large open spaces on the upper and lower [...]

- 4 baths
- Office
- Commercial Sale
- Active



Basics

Category: Commercial Sale

Status: Active

Lot size: 0.9 sq ft

Bathrooms Full: 4

Business Type: Professional/Office, Professional Service

Type: Office

Bathrooms: 4 baths

Year built: 1977

Lot Size Acres: 0.9 acres

County: Calhoun

Call us now



Phone: (231)730-8781
 Email: tuckerbennerteam@gmail.com
 Address: 2747 Lakeshore Drive, Twin Lake, MI 49457



Building Details

Building Area Total: 6013 sq ft

Construction Materials: Vinyl Siding, Brick, Stone

StoriesTotal: 3

Foundation Details: Block

Number Of Units Total: 1

Heating: Forced Air

Roof: Composition

Number Of Buildings: 1

Amenities & Features

Inclusions: Real Estate

Utilities: Cable Available, Phone Connected, Natural Gas Connected, Electricity Connected

Interior Features: Broadband

Fees & Taxes

Tax Year: 2026

School Information

High School District: Marshall

Miscellaneous

Road Surface Type: Paved

CrossStreet: S Hamilton

Listing Terms: Conventional, Cash

Call us now



Phone: (231)730-8781

Email: tuckerbennerteam@gmail.com

Address: 2747 Lakeshore Drive, Twin Lake, MI 49457

