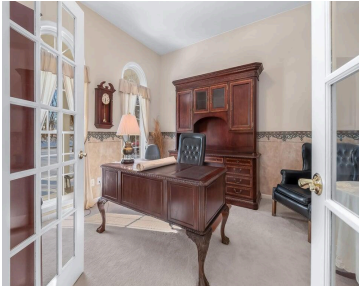
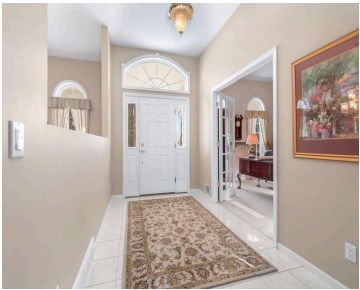


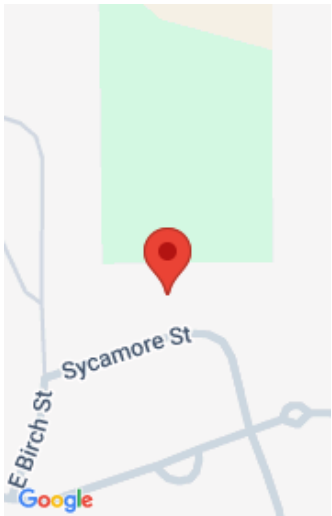
# 310, SYCAMORE, LITCHFIELD, MI, 49252

<https://tuckerbenner.com>



This beautifully maintained, one-owner home offers over 4,700 finished square feet on a quiet cul-de-sac in the city of Litchfield. Designed with comfort, space, and style in mind, this property delivers quality throughout — from the stone-accented exterior to the expansive finished basement. The main floor features a spacious primary suite with ensuite bath, a [...]

- 3 beds
- 4 baths
- Single Family Residence
- Residential
- Active
- 4667 sq ft



## Call us now



Phone: (231)730-8781  
Email: [tuckerbennerteam@gmail.com](mailto:tuckerbennerteam@gmail.com)  
Address: 2747 Lakeshore Drive, Twin Lake, MI 49457



# Basics

<b>Category:</b> Residential	<b>Type:</b> Single Family Residence
<b>Status:</b> Active	<b>Bedrooms:</b> 3 beds
<b>Bathrooms:</b> 4 baths	<b>Area:</b> 4667 sq ft
<b>Lot size:</b> 0.41 sq ft	<b>Year built:</b> 2003
<b>Bathrooms Full:</b> 3	<b>Lot Size Acres:</b> 0.41 acres
<b>Rooms Total:</b> 13	<b>County:</b> Hillsdale
<b>Bathrooms Half:</b> 1	

# Building Details

<b>Building Area Total:</b> 3154 sq ft	<b>Construction Materials:</b> Stone, Vinyl Siding
<b>Architectural Style:</b> Contemporary	<b>Sewer:</b> Public
<b>Heating:</b> Forced Air	<b>Stories:</b> 2
<b>Roof:</b> Composition, Shingle	<b>Basement:</b> Full

# Amenities & Features

<b>Laundry Features:</b> Laundry Room, Main Level	<b>Flooring:</b> Carpet, Ceramic Tile
<b>Utilities:</b> Electricity Available, Natural Gas Connected	<b>Parking Features:</b> Garage Faces Side
<b>Fireplace Features:</b> Family Room, Gas Log, Living Room	<b>Garage Spaces:</b> 3
<b>WaterSource:</b> Public	<b>Appliances:</b> Cooktop, Dishwasher, Double Oven, Dryer, Microwave, Refrigerator, Washer, Water Softener Owned
<b>Interior Features:</b> Ceiling Fan(s), Garage Door Opener, Wet Bar, Eat-in Kitchen, Pantry	<b>Lot Features:</b> Level
<b>Window Features:</b> Screens, Insulated Windows, Window Treatments	<b>Patio And Porch Features:</b> Covered, Patio, Porch(es)
<b>Fireplaces Total:</b> 2	<b>Cooling:</b> Central Air

Call us now

---

# Fees & Taxes

**Tax Assessed Value:** \$105,246  
**Tax Annual Amount:** \$3,623

**Tax Year:** 2024

---

# School Information

**High School District:** Litchfield

---

# Miscellaneous

**Road Surface Type:** Paved  
**Listing Terms:** Cash, VA Loan, Conventional

**CrossStreet:** Chestnut

**Call us now**