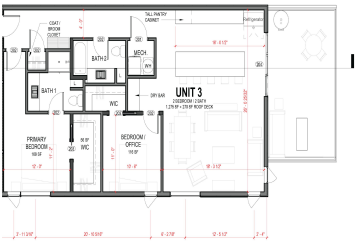


310, WASHINGTON, GRAND HAVEN, MI, 49417

<https://tuckerbenner.com>



Welcome to Phase III of The Lofts at 300. This final phase of The Lofts at 300 welcomes one commercial unit and 3 residential units. This particular unit boasts 2 bedroom and 2 full bath with 1275 square feet of living space and a 270 sq/ft deck. This unique outdoor space is perfect for entertaining, [...]

- 2 beds
- 2 baths
- Condominium
- Residential
- Active
- 1275 sq ft



Call us now

Phone: (231)730-8781
Email: tuckerbennerteam@gmail.com
Address: 2747 Lakeshore Drive, Twin Lake, MI 49457

Basics

Category: Residential

Status: Active

Bathrooms: 2 baths

Lot size: 0 sq ft

Bathrooms Full: 2

Rooms Total: 7

Type: Condominium

Bedrooms: 2 beds

Area: 1275 sq ft

Year built: 2025

Lot Size Acres: 0 acres

County: Ottawa

Building Details

Building Area Total: 1275 sq ft

Construction Materials: Hard/Plank/Cement Board, Other

Architectural Style: Other

Sewer: Public Sewer

Heating: Forced Air

Stories: 1

Common Walls: End Unit

Basement: Other

Amenities & Features

Laundry Features: In Unit

Utilities: Public Water, Public Sewer, Electricity Available, Cable Available

Association Amenities: Pets Allowed

WaterSource: Public

Appliances: Dishwasher, Microwave, Range, Refrigerator

Interior Features: Kitchen Island

Exterior Features: Deck(s)

Fireplaces Total: 1

Cooling: Central Air

Fees & Taxes

Association Fee Frequency: Monthly

Association Fee: \$250

Association Fee Includes: Water, Trash, Snow Removal, Sewer, Lawn/Yard Care

Call us now



School Information

High School District: Grand Haven

Miscellaneous

Road Surface Type: Paved

CrossStreet: Franklin and Third

Listing Terms: Cash, Conventional

Call us now