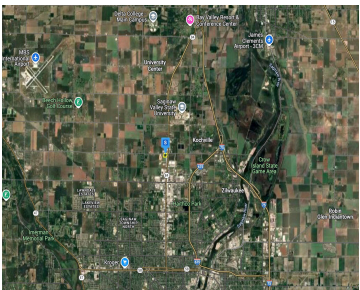


3101, KOCHVILLE, SAGINAW, MI, 48604
https://tuckerbenner.com



Prime 10-acre commercial lot in Kochville Township, perfect for development. Zoned B-3 with power and public water available, this developer special offers flexibility for a variety of business uses. Ideally located near Saginaw Valley State University and surrounded by growing businesses, the property benefits from a thriving area and high visibility. Conveniently situated near I-675 [...]

- 0 baths
- Commercial Land
- Land
- Active



Call us now

Phone: (231)730-8781
Email: tuckerbennerteam@gmail.com
Address: 2747 Lakeshore Drive, Twin Lake, MI 49457

Basics

Category: Land

Status: Active

Lot size: 10 sq ft

County: Saginaw

Type: Commercial Land

Bathrooms: 0 baths

Lot Size Acres: 10 acres

Amenities & Features

Utilities: Electricity Available, Electricity Connected

WaterSource: Public

Fees & Taxes

Tax Assessed Value: \$45,776

Tax Year: 2025

Tax Annual Amount: \$1,936

School Information

High School District: Saginaw Public

HighSchool: Saginaw Arts and Sciences Academy

Middle Or Junior School: Saginaw Arts and Sciences Academy

Elementary School: Zilwaukee K8 School

Miscellaneous

Road Surface Type: Paved

CrossStreet: Bay Rd

Listing Terms: Cash, Conventional

Call us now