

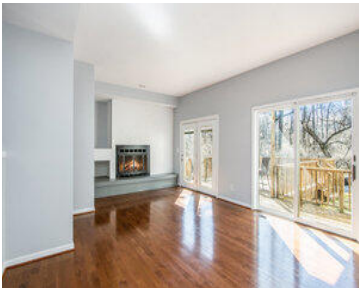
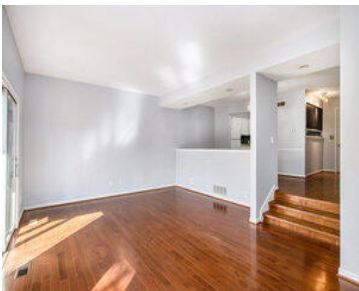
311, PRATT, KALAMAZOO, MI, 49001

https://tuckerbenner.com

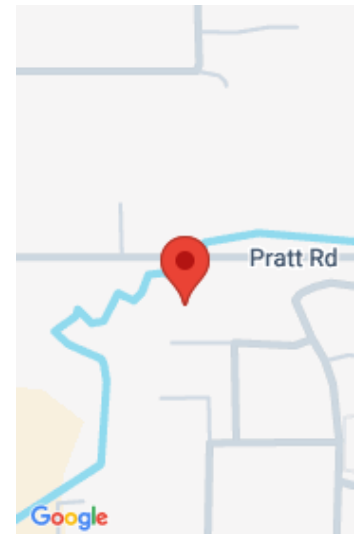


\$239,900

Come see this sharp contemporary design in awesome creekside setting offering privacy and entertaining space- all so convenient and close to shopping! This large end townhome features a large double car garage, lovely side yard and newer huge deck to enjoy nature. The main level has fully equipped kitchen, opening to dining room, overlooking large [...]



- 2 beds
- 3 baths
- Condominium
- Residential
- Active
- 2236 sq ft



Call us now

Phone: (231)730-8781  
Email: tuckerbennerteam@gmail.com  
Address: 2747 Lakeshore Drive, Twin Lake, MI 49457



# Basics

**Category:** Residential

**Status:** Active

**Bathrooms:** 3 baths

**Lot size:** 0 sq ft

**Bathrooms Full:** 2

**Rooms Total:** 6

**Bathrooms Half:** 1

**Type:** Condominium

**Bedrooms:** 2 beds

**Area:** 2236 sq ft

**Year built:** 1981

**Lot Size Acres:** 0 acres

**County:** Kalamazoo

# Building Details

**Building Area Total:** 1536 sq ft

**Architectural Style:** Traditional

**Heating:** Forced Air

**Roof:** Composition

**Construction Materials:** Wood Siding

**Sewer:** Public

**Stories:** 2

**Basement:** Full

# Amenities & Features

**Laundry Features:** Main Level

**Utilities:** Natural Gas Available, Electricity Available, Cable Available, Natural Gas Connected, Cable Connected

**Parking Features:** Garage Door Opener, Attached

**Fireplace Features:** Living Room, Wood Burning

**WaterSource:** Public

**Interior Features:** Garage Door Opener, Wet Bar, Pantry

**Patio And Porch Features:** Deck

**Cooling:** Central Air

**Flooring:** Carpet, Wood

**Association Amenities:** End Unit

**Waterfront Features:** Stream/Creek

**Garage Spaces:** 2

**Appliances:** Dishwasher, Dryer, Oven, Range, Refrigerator, Washer

**Window Features:** Insulated Windows, Window Treatments

**Fireplaces Total:** 1

Call us now



---

# Fees & Taxes

**Tax Assessed Value:** \$102,273    **Association Fee Frequency:** Monthly  
**Association Fee:** \$360    **Tax Year:** 2025  
**Tax Annual Amount:** \$5,113.52    **Association Fee Includes:** Water, Trash, Snow Removal,  
Sewer, Lawn/Yard Care

---

# School Information

**High School District:** Kalamazoo

---

# Miscellaneous

**Road Surface Type:** Paved    **CrossStreet:** Westnedge and Burdick  
**Listing Terms:** Cash, Conventional

**Call us now**