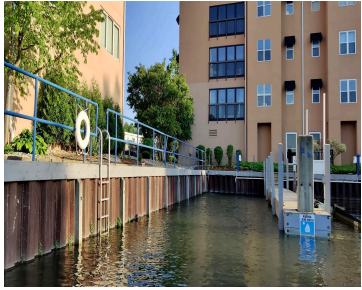


312, WATER, ST. JOSEPH, MI, 49085

<https://tuckerbenner.com>



This 55' boat slip offers unparalleled convenience with easy docking— No turns required once you enter the Marina. Situated in a prime harbor location with NO BRIDGES to wait for, it boasts the shortest distance to Lake Michigan of any Marina in the area, providing quick access to open waters. Enjoy being adjacent to Silver [...]

- 0 baths
- Dockominium
- Land
- Active



Basics

Category: Land

Status: Active

Lot size: 0.02 sq ft

County: Berrien

Type: Dockominium

Bathrooms: 0 baths

Lot Size Acres: 0.02 acres



Call us now

Phone: (231)730-8781

Email: tuckerbennerteam@gmail.com

Address: 2747 Lakeshore Drive, Twin Lake, MI 49457



Amenities & Features

Utilities: Storm Sewer, Water Available, Sewer Available, Natural Gas Available, Electricity Available, Cable Available, Broadband, Water Connected, Electricity Connected

Waterfront Features: River

Association Amenities: Pets Allowed, Clubhouse, Pool

Lot Features: Recreational, Sidewalk

Fees & Taxes

Tax Assessed Value: \$15,100 **Association Fee Frequency:** Quarterly

Association Fee: \$500

Tax Year: 2023

Tax Annual Amount: \$899

Association Fee Includes: Electricity, Lawn/Yard Care, Sewer, Snow Removal, Trash, Water

School Information

High School District: St. Joseph

Miscellaneous

Road Surface Type: Paved

CrossStreet: Lake St Broad St

Listing Terms: Cash, Conventional



Call us now

Phone: (231)730-8781

Email: tuckerbennerteam@gmail.com

Address: 2747 Lakeshore Drive, Twin Lake, MI 49457

